

Arte Primitivo

Howard S. Rose Gallery, Inc.

Fine Pre-Columbian, Tribal Art & Classical Antiquities



Arte Primitivo

Fine Pre-Columbian, Tribal Art & Classical Antiquities

February 26, 2018

AUCTION 88



Fine Pre-Columbian, Tribal Art & Classical Antiquities

First Lot Closes: Monday, February 26th, 2018 at 10:00 A.M. E.S.T.



Lot: 214



Lot: 505

Front cover Lot: 116

EXHIBITION: February 14th through sale dates
Monday – Friday 11 A.M. – 5 P.M.

WEEKEND VIEWING: Saturday,
February 24th 1 P.M. – 4 P.M.

Rear cover Lot: 128

All Lots can be viewed in full color with multiple images, condition reports, and expanded description on our website

Bid on-line 24 hours a day at www.artep primitivo.com or
Bid manually: tel. 212.570.6999 ext. 2 fax 212.570.1899 email: info@artep primitivo.com www.artep primitivo.com

A 20% buyer's premium will be added to the hammer price of each lot.

ABSENTEE, ON-LINE AUCTION CONDITIONS OF SALE

1. This is a vetted, on-line, absentee auction. **Each lot has a printed, estimated value range and the closing time of the lot. Each lot also has an unprinted reserve, which is generally about 1/2 of the low estimate, but may vary.** The estimates are intended as a guide only. The closing times listed are New York time (Eastern Standard Time).

2. There are several ways to bid. You may see current bid standings and place bids 24 hours a day, 7 days a week on-line at www.artep primitivo.com or you may bid manually by telephone, fax, e-mail or in person at the gallery. In any case, you must register to bid. On-line bidders will need a valid credit card to register. Manual bidders will also need a valid credit card, unless prior credit arrangements have been made.

3. On-line bidders will receive an e-mail notifying them if they have been outbid, as long as they bid at least one day prior to the lot closing time.

4. For manual bidders, we strongly recommend that you call, fax or e-mail your bids in, rather than using the Postal Service, especially if the sale date is less than a week away. Early bidding is recommended as one risks losing a lot if you are unable to reach us in time.

5. **A buyer's premium equal to 20%** will be added to the hammer price of each lot.

6. Payment is due, in full, upon receipt of invoice, unless specific other arrangements have been made prior to the auction. Lots will be shipped only after receipt of payment in full and in the order in which they are received. **Final invoices will not automatically be charged to your credit card unless requested via phone or email.** Credit card payments will be subject to a 5% surcharge due to credit card processing fees. You may choose to pay by check or bank wire, however, **all unpaid invoices, 30 days old will be charged to your credit card with the 5% credit card surcharge and a late fee equal to 1% of your total unpaid balance.** Failure to settle your auction invoice within 30 days may also, at our discretion, result in forfeiture of the lots as well as future bidding privileges. Should an invoice remain unpaid after 30 days and we are unable to collect via credit card, we then reserve the right to use at bidder's expense, any and all remedies available to us by law, to collect monies due, plus incurred fees and penalties, as stated.

7. New York State sales tax will be added to your invoice unless you are tax exempt, and we have a copy of your resale certificate on file or your lots are shipped out of state. No exceptions. As a service to our clients, we can arrange shipment of your purchase. Shipping charges listed on-line are estimates only and could vary slightly once shipment is made. Shipping and handling fees will be added to your domestic invoice unless items are picked up at the gallery. Domestic shipping will be via U.P.S. unless oversized or otherwise requested. Non USA shipping will be by Post,

FEDEX or BAX / Schenker. Any applicable duty or VAT is the client's responsibility and may be charged to your credit card if charged back to us.

8. You may call the gallery prior to the closing times of the auction lots to place new bids or to check the status of your already placed bids and adjust them if necessary. Incoming bids will be accepted until the closing time of the individual lot, however, we strongly recommend not waiting until the last minute to place your bids as phone lines may be congested and it may take several minutes to log-in to your account.

9. Your bid, either written, oral or electronic grants Arte Primitivo the authority to protect you up to the limit set by you on your stated bid, but not to bid your full bid amount unless the next recorded bid below yours supports that limit. The buyer's premium will be added to your limit.

10. Only the current high bid will be disclosed by the electronic auctioneer, not the top bid. In the event of tied bids, the earliest received bid will be adjudged the high bidder.

11. The current high bid is determined by taking the second highest bid and increasing it by one increment. Bidding Increments are as follows:

Up to \$750 — \$25; \$750 to 1,500 — \$50; \$1,500 to \$3,000 — \$100; \$3,000 to \$7,500 — \$250; \$7,500 to \$15,000 — \$500; over \$15,000 — \$1,000. Example: you bid \$1000 on a lot which has a minimum bid/reserve of \$500. Your bid is the highest received to date. The second highest bid received, to date, is \$525. The current high bid is yours at \$550. Any new bid received below your high bid of \$1000 will automatically be topped by the auctioneer, bidding for your account.

12. No lot will hammer down while there is still bidding activity on it. If the lot closing time is less than 5 minutes away, any newly placed bid will extend that lot closing time for an additional 5 minutes, plus the remainder of that minute fraction. There is no limit as to how many 5 minute extensions may occur. When no bidding occurs for 5 minutes prior to the printed or extended closing time, the lot will then hammer to the highest bidder.

13. All lots are guaranteed genuine, as described both as to condition and authenticity. Sizes listed are the longest possible measure, excluding stands or mounts. Mounts are included with lots only when listed in the descriptions. Any lot may be returned within ten days if inaccurately described as to age or extent of damage. All returned lots must be adequately insured against loss or damage and must be received by us in the same condition as when shipped. Any dispute as to authenticity, must be made within three months of the sale date. After that period, all sales will be considered final. Accurately described lots are not returnable. Any lot returned after the consignor has been paid (65 days after auction closing date) will be for credit

only. Prompt payment and pick-up is recommended to avoid late fees and late return situations.

14. Lots will be on view at the gallery for a period of two weeks, prior to the closing times, and during viewing hours. Multiple, color images. Condition reports and expanded descriptions of each lot may be viewed on-line at (www.artep primitivo.com).

15. Unsold lots may be re-offered immediately after the auction on a buy or bid basis, pending consignor approval, and with their closing times being postponed for up to one week from their originally listed closing time. Should you bid the buy now price, plus the 20% buyer's premium, on any re-offered, unsold lot, then you win the lot and the auction ends. If you bid an amount beneath the buy now price, and your bid is the highest received, we will, upon the close of that lot, negotiate that bid, with the consignor. Should the consignor judge the offer unacceptable, then there shall be no sale of that lot. If the offer is accepted, you will be invoiced for the bid price, plus the buyer's premium and any applicable shipping charges or sales tax. Consignor may submit a counter offer. Should you not accept that offer, the lot may then be offered to another bidder

16. Auctioneer reserves the right to withdraw any lot for any reason, prior to the auction closing. We are not responsible for any typographical errors either in the printed catalogue or in the on-line catalogue. In the event of a system failure or loss of internet connection, auctioneer reserves the right to postpone any closing time and date of any unsold lots. We will execute absentee bids, at the bidders request, faithfully and to the best of our ability, but we assume no responsibility for errors, deletions or omissions. Any disputed lot may be re-offered or re-opened for extended bidding, at the auctioneers discretion.



Lot: 320

CREDITS

SALE CATALOGUED BY
Howard S. Rose
Charles G. Moore
Claudine Colmenar-Rose

PHOTOGRAPHY
Gregory J. Adams

INSTALLATION
Charles G. Moore
Sarah Lettiere

LAYOUT AND DESIGN
Gregory J. Adams

SHIPPING DEPARTMENT
Victor Carreno
Fabio Duran

LICENSED AUCTIONEER
Howard S. Rose
N.Y.C. Dept. of Consumer Affairs
License # 2025488

**Condition reports
and expanded
descriptions available at
www.artep primitivo.com**



1. Olmec Pottery Head
Las Bocas, Mexico. Ca. 1000 B.C. 5-1/2"H.
The Allan Stone Collection, acquired 1980's.
Est. \$2,500-\$3,500
Closing: Monday, February 26th, 10:00 A.M.



2. Olmec Hardstone Jugito
Mexico. Ca. 1000 B.C. 4-3/4"L. x 4-1/2"H. x 4-1/4"D.
Collection of Albert J. and Monique Grant, NYC., acquired 1950's-1960's.
Est. \$4,000-\$6,000
Closing: Monday, February 26th, 10:02 A.M.



3. Olmecoid Female Figure with Top Knot Hair Style
Mexico. Ca. 1000-500 B.C. 7-1/2"H.
Ex. Michael Kalman collection, Arcadia, CA.,
acquired 1980's. Private S. Calif. collection.
Est. \$1,000-\$1,500
Closing: Monday, February 26th, 10:04 A.M.



4. Olmec Blue Jade Celt
Mexico. Ca. 800 B.C. 4"L.
Ex. Collection of David Bramhall, NYC., acquired
1960's-1970's. Ex. Arte Primitivo, sale 31, lot 23.
Est. \$1,200-\$1,800
Closing: Monday, February 26th, 10:06 A.M.



5. Olmec Blue Jade Celt
Mexico. Ca. 800 B.C. 3-3/4"L.
Ex. Collection of David Bramhall, NYC., acquired
1960's-1970's. Ex. Arte Primitivo, sale 31, lot 23.
Est. \$1,500-\$2,500
Closing: Monday, February 26th, 10:08 A.M.



6. Tlatilco Pretty Lady Standing Figure
Tlatilco, Mexico. Ca. 1150-550 B.C. 5-5/8"H.
Private Nevada collection,
ex. Harmer Rooke Galleries, NYC., 1980's.
Collection # HR.97.2. Exhibited at Majorie
Barrick Museum, UNLV, early 2000's.
Est. \$500-\$800
Closing: Monday, February 26th, 10:10 A.M.



7. Olmecoid/Mezcala Speckled Green Stone Figure
Guerrero, Mexico.
Ca. 600-400 B.C. 3-5/8"H.
Ex. collection of David Bramhall,
NYC., acquired early 1970's.
Est. \$1,500-\$2,000
Closing: Monday, February 26th, 10:12 A.M.



8. Tlatilco Double Face Female Figure
Mexico.
Ca. 1100-800 B.C. 4-1/4"H.
Private Southwestern Collection.
Ex. collection of Albert J. and Monique
Grant, NYC., acquired 1950's-1960's.
Est. \$1,500-\$2,000
Closing: Monday, February 26th, 10:14 A.M.



9. Olmec Small Pottery Figure
Mexico.
Ca. 1000-500 B.C. 4-1/4"H. x 2-7/8"W.
Private Nevada collection,
ex. Harmer Rooke Galleries, NYC., 1980's.
Collection # 94HR.3. Exhibited at Majorie Barrick
Museum, UNLV, early 2000's.
Est. \$500-\$800
Closing: Monday, February 26th, 10:16 A.M.



10. Tlatilco Type K Pretty Lady
Tlatilco, Mexico.
Ca. 1150-550 B.C.
4-1/2"H. x 2-1/2"W.
Private Nevada collection, ex. Harmer Rooke
Galleries, NYC., 1980's. Exhibited at Majorie Barrick
Museum, UNLV, 1980's and early 2000's.
Est. \$500-\$800
Closing: Monday, February 26th, 10:18 A.M.



11. Chupicuaro Standing Female Figures (2)
Chupicuaro, Mexico.
Ca. 400-100 B.C. 4-1/8"H. & 4-1/2"H.
Private Nevada collection, ex. Dr. David Harner
collection, Arkansas, 1950's-1960's, collection #
FF.16 and FF.17. Exhibited at the Marjorie Barrick
Museum, UNLV, early 2000's.
Est. \$700-\$1,100
Closing: Monday, February 26th, 10:20 A.M.

12. Chupicuaro Polychrome Oval Vessel
 Chupicuaro, Mexico. Ca. 400-100 B.C. 3-1/2"H. x 10-1/2"L.
 Private Nevada collection, ex. Dr. David Harner collection, Arkansas,
 1950's-1960's. Exhibited at the Marjorie Barrick Museum, UNLV, 1990's.
 Est. \$500-\$800
 Closing: Monday,
 February 26th,
 10:22 A.M.



15. Chupicuaro Seated Figures (6)
 Chupicuaro, Mexico. Ca. 400-100 B.C. 2-1/8"H.
 Private Nevada collection, ex. Dr. David Harner collection, Arkansas,
 1950's-1960's, collection # CH100; CH102; CH103; CH104; CH105; CH106.
 Exhibited at the Marjorie Barrick Museum, UNLV, early 2000's.
 Est. \$1,000-\$1,500
 Closing: Monday, February 26th, 10:28 A.M.



16. Chupicuaro Male & Female Matching Figures (2)
 Chupicuaro, Mexico. Ca. 400-100 B.C. 3-1/4"L.
 Collection of Mary K. F. Leong, WA., acquired from
 The Lands Beyond Gallery, NYC, 1970-1980's.
 Est. \$600-\$900
 Closing: Monday, February 26th, 10:30 A.M.

17. Chupicuaro Canopy Beds with Figures (2)
 Chupicuaro, Mexico. Ca. 400-100 B.C.
 2-1/8"H. x 2-5/8"L. & 2-1/8"H. x 2-3/8"L.
 Collection of Albert J. and Monique Grant, NYC.,
 acquired 1950's-1960's. Item #'s 21-69 & 22-69.
 Est. \$600-\$900
 Closing: Monday, February 26th, 10:32 A.M.



13. Chupicuaro Small Blackface Figure
 Chupicuaro, Mexico. Ca. 400-100 B.C.
 4-3/4"H. x 3-1/4"W.
 Private Nevada collection, ex. Dr. David Harner collection, Arkansas,
 1950's-1960's. Exhibited at the Marjorie Barrick Museum, UNLV, early 1980's.
 Est. \$3,000-\$5,000
 Closing: Monday, February 26th, 10:24 A.M.



14. Chupicuaro Large Seated Female
 Chupicuaro, Mexico. Ca. 400-100 B.C. 4-7/8"H. x 3-1/2"W.
 Private Nevada collection, ex. Dr. David Harner collection,
 Arkansas, 1950's-1960's, collection # N.32. Exhibited
 at the Marjorie Barrick Museum, UNLV, early 2000's.
 Est. \$600-\$900
 Closing: Monday, February 26th, 10:26 A.M.



18. Michoacan Large Pretty Lady Figure
 Michoacan, Mexico.
 Ca. 550-100 B.C. 7-5/8"H.
 Ex. John Hilsabeck Collection, Orange Co., CA.,
 acquired 1960's-1970's. Private S. Calif. collection.
 Est. \$600-\$900
 Closing: Monday, February 26th, 10:34 A.M.



19. Michoacan Large Standing Pretty Lady
 Michoacan, Mexico. Ca. 400-100 B.C. 7"H.
 Private Nevada collection, ex. Dr. David Harner
 collection, Arkansas, 1950's-1960's, collection #
 FF.38. Exhibited at the Marjorie
 Barrick Museum, UNLV, early 2000's.
 Est. \$500-\$800
 Closing: Monday, February 26th, 10:36 A.M.



20. Michoacan Redware Pretty Lady
 Michoacan, Mexico. Ca. 400-100 B.C. 5"H.
 Collection of Mary K. F. Leong, WA.,
 acquired from The Lands Beyond Gallery,
 NYC, inv. # 15-8-nc, early 1970's.
 Est. \$600-\$900
 Closing: Monday, February 26th, 10:38 A.M.

21. Michoacan Seated Female Figures (2)
 Michoacan, Mexico. Ca. 400-100 B.C. 2-1/2" & 3-1/2"H.
 Collection of Albert J. and Monique Grant, NYC.,
 acquired 1950's-1960's. Item #'s TB7 & MC15.
 Est. \$1,000-\$1,500
 Closing: Monday, February 26th, 10:40 A.M.



22. Olmecoid Stone Feline Head
 Central Mexico. Ca. 800-200 B.C. 3-1/4"L. x 2-1/2"H.
 R & A Esman collection, NYC., acquired 1970's.
 Est. \$800-\$1,200
 Closing: Monday, February 26th, 10:42 A.M.

23. Chupicuaro Seated Pretty Ladies (3)
 Chupicuaro, Mexico. Ca. 1100-550 B.C. 2-1/4", 2-3/8" & 2-3/8"H.
 Collection of Albert J. and Monique Grant, NYC.,
 acquired 1950's-1960's. Item #'s FB9, FB10 & OA6.
 Est. \$1,000-\$1,500
 Closing: Monday, February 26th, 10:44 A.M.



26. Michoacan Blackware Pipe
 Michoacan, Mexico.
 Ca. 200 B.C.-200 A.D. 14-3/8"L.
 Private Nevada collection, ex. Dr. David Harner
 collection, Arkansas, 1950's-1960's. Exhibited at the
 Marjorie Barrick Museum, UNLV, early 2000's.
 Est. \$500-\$800
 Closing: Monday, February 26th, 10:50 A.M.



27. Michoacan Pipe with Dog Decoration
 Michoacan, Mexico.
 Ca. 200 B.C.-200 A.D. 10-7/8"L.
 Private Nevada collection, ex. Dr. David Harner
 collection, Arkansas, 1950's-1960's, collection
 #86.13. Exhibited at the Marjorie Barrick Museum,
 UNLV, early 2000's.
 Est. \$500-\$800
 Closing: Monday, February 26th, 10:52 A.M.

28. Michoacan Brownware Bowl with Incised Decoration
 Michoacan, Mexico. Ca. 200 B.C.-200 A.D.
 2"H. x 7-1/4"D.
 Private Nevada collection,
 ex. Dr. David Harner collection,
 Arkansas, 1950's-1960's, collection # M.253.
 Exhibited at the Marjorie Barrick
 Museum, UNLV, 1990's.
 Est. \$500-\$800
 Closing: Monday, February 26th, 10:54 A.M.



24. Michoacan Flared Bowl with Stucco Decorations
 Michoacan, Mexico. Ca. 200 A.D. 3-1/8"H. x 8-1/2"D.
 Private Nevada collection, ex. Dr. David Harner collection,
 Arkansas, 1950's-1960's. Item # ST33. Exhibited at the
 Marjorie Barrick Museum, UNLV, 1990's.
 Est. \$600-\$900
 Closing: Monday, February 26th, 10:46 A.M.



25. Michoacan Skirted Pretty Lady
 Michoacan, Mexico. Ca. 400-100 B.C. 4-1/8"L.
 Collection of Albert J. and Monique Grant, NYC.,
 acquired 1950's-1960's. Item # PA13.
 Est. \$500-\$800
 Closing: Monday, February 26th, 10:48 A.M.



29. Mezcala Large Earpools (4)
 Guerrero, Mexico. Ca. 400-100 B.C. 2-1/2" to 3"W.
 Private Nevada collection, ex. Dr. David Harner
 collection, Arkansas, 1950's-1960's.
 Est. \$600-\$900
 Closing: Monday, February 26th, 10:56 A.M.



30. Mezcala Anthropomorphic Axe God
Mexico. Ca. 500 B.C. 6-1/8"H.
Private Texas collection, ex. Arte Primitivo,
sale 31, lot 11, collection of Allan L. Long, NYC.,
acquired 1960's-1970's.
Est. \$2,000-\$3,000
Closing: Monday, February 26th, 10:58 A.M.



31. Mezcala Seated "Star Gazer"
Guerrero, Mexico.
Ca. 400 B.C. 4-1/8"H. x 3-3/4"W.
Ex. Barry Kernerman collection, Toronto,
Ex. Samuel Dubiner collection, Tel Aviv, 1970's.
Est. \$5,000-\$8,000
Closing: Monday, February 26th, 11:00 A.M.



35. Mezcala Small Female Figure
Guerrero, Mexico. Ca. 400 B.C. 3-1/8"H.
Private Nevada collection, ex. Dr. David Harner
collection, Arkansas, 1950's-1960's. Exhibited at the
Marjorie Barrick Museum, UNLV, early 2000's.
Est. \$600-\$900
Closing: Monday, February 26th, 11:08 A.M.



36. Mezcala Gray-Brown Stone Idol
Guerrero, Mexico.
Ca. 500-200 B.C. 5-1/4"H.
Ex. Collection of David Bramhall, NYC., acquired
1960's-1970's. Ex. Arte Primitivo, sale 31, lot 52.
Est. \$800-\$1,200
Closing: Monday, February 26th, 11:10 A.M.



37. Mezcala Stone Figure
Guerrero, Mexico. Ca. 400 B.C. 5-7/8"H.
Private Nevada collection, ex. Dr. David Harner
collection, Arkansas, 1950's-1960's. Exhibited
at the Marjorie Barrick Museum, UNLV, 1990's.
Est. \$1,000-\$1,500
Closing: Monday, February 26th, 11:12 A.M.



32. Mezcala Stone Figure
Guerrero, Mexico.
Ca. 400-100 B.C. 6-3/4"H.
Ex. John Bryson collection, Time-Life
photojournalist, collected 1950's - early 1970's.
Est. \$2,000-\$3,000
Closing: Monday, February 26th, 11:02 A.M.



33. Mezcala Stone Standing Figure
Guerrero, Mexico.
Ca. 400 B.C. 6-1/16"H.
Collection of Swanchild Castle,
Brooklyn, NY., acquired 1960's.
Est. \$1,200-\$1,800
Closing: Monday, February 26th, 11:04 A.M.



34. Mezcala Blue-Gray Stone Figure
Guerrero, Mexico. Ca. 400 B.C. 6-1/2"H.
Private Nevada collection, ex. Dr. David Harner
collection, Arkansas, 1950's-1960's. Exhibited
at the Marjorie Barrick Museum, UNLV, 1990's.
Est. \$1,000-\$1,500
Closing: Monday, February 26th, 11:06 A.M.



38. Mezcala Stone Mask, Olmec Face Pendant & Seated Figure (3)
Mexico. Ca. 800-200 B.C. 2" to 2-1/2"H.
Ex. Collection of David Bramhall, NYC.,
acquired 1960's-1970's. Ex. Arte Primitivo, sale 31.
Est. \$1,200-\$1,800
Closing: Monday, February 26th, 11:14 A.M.

39. Mezcala Stone Seated Figure
Guerrero, Mexico. Ca. 500-200 B.C. 3"H. x 2-1/4"D.
Ex. Collection of David Bramhall, NYC., acquired
1960's-1970's. Ex. Arte Primitivo, sale 31, lot 52.
Est. \$800-\$1,200
Closing: Monday, February 26th, 11:16 A.M.

40. Mezcala Stone Figures & Mask Pendant (5)
Guerrero, Mexico. Ca. 400-100 B.C. 2-5/8" to 5"H.
Private Nevada collection, ex. Dr. David Harner
collection, Arkansas, 1950's-1960's.
Est. \$750-\$1,000
Closing: Monday, February 26th, 11:18 A.M.



41. Colima Whistling Warrior with Protective Helmet
Colima, Mexico. Ca. 100 B.C. - 250 A.D. 5-1/4"H.
Private Nevada collection, ex. Dr. David Harner
collection, Arkansas, 1950's-1960's, collection #
86.77. Exhibited at the Marjorie Barrick Museum,
UNLV, 1990's and early 2000's.
Est. \$400-\$600
Closing: Monday, February 26th, 11:20 A.M.



42. Colima Large Pottery Shaman
Colima, Mexico. Ca. 100 B.C. - 250 A.D. 8-3/4"H.
Collection of Mary K. F. Leong, WA., acquired from
The Lands Beyond Gallery, NYC., 1970's - 1980's.
Est. \$3,000-\$5,000
Closing: Monday, February 26th, 11:22 A.M.



43. Colima Warrior with Sling
Colima, Mexico. Ca. 100 B.C. - 250 A.D. 5"H.
Private Nevada collection, ex. Dr. David Harner
collection, Arkansas, 1950's-1960's, collection #
11.49. Exhibited at the Marjorie Barrick
Museum, UNLV, 1990's and early 2000's.
Est. \$400-\$600
Closing: Monday, February 26th, 11:24 A.M.



47. Colima Redware Double Fish Olla
Colima, Mexico. Ca. 100 B.C. - 250 A.D. 6-3/4"H. x 10-1/2"D.
Ex. Osuma Gallery, Santa Barbara, CA.,
acquired early 1980's. Private S. Calif. collection.
Est. \$1,500-\$2,500
Closing: Monday, February 26th, 11:32 A.M.

48. Colima Redware Gadrooned Parrot Bowl
Colima, Mexico. Ca. 100 B.C. - 250 A.D. 9"H. x 14-1/2"W. (at feet).
Collection of Mary K. F. Leong, WA., acquired from
The Lands Beyond Gallery, NYC., 1970's - 1980's.
Est. \$2,500-\$3,500
Closing: Monday, February 26th, 11:34 A.M.



49. Colima Parrot Vessel
Colima, Mexico. Ca. 100 B.C. - 250 A.D. 5-1/2"H. x 9"W.
Collection of Mary K. F. Leong, WA., acquired from
The Lands Beyond Gallery, NYC., 1970-1980's.
Est. \$700-\$1,000
Closing: Monday, February 26th, 11:36 A.M.



44. Colima Shaman with Sling & Scorpion Headdress
Colima, Mexico. Ca. 100 B.C. - 250 A.D. 7-1/2"H.
Private Nevada collection, ex. Dr. David Harner
collection, Arkansas, 1950's-1960's, collection #
11.37. Exhibited at the Marjorie Barrick Museum,
UNLV, 1990's and early 2000's.
Est. \$400-\$600
Closing: Monday, February 26th, 11:26 A.M.



45. Colima Large Flat Figure with Incised Hairdo
Colima, Mexico. Ca. 100 B.C. - 250 A.D. 9-1/2"H.
Private Nevada collection, ex. Dr. David Harner
collection, Arkansas, 1950's-1960's, collection
84.1. Exhibited at the Marjorie Barrick
Museum, UNLV, 1990's and 2000's.
Est. \$500-\$750
Closing: Monday, February 26th, 11:28 A.M.



46. Colima Brownware Cylinder Vase
Colima, Mexico. Ca. 100 B.C.-250 A.D.
9-5/8"H. x 5-3/4"D.
Private Nevada collection, ex. Dr. David Harner
collection, Arkansas, 1950's-1960's. Exhibited
at the Marjorie Barrick Museum, UNLV, 1990's.
Est. \$600-\$900
Closing: Monday, February 26th, 11:30 A.M.



50. Colima Redware Decorated Olla
Colima, Mexico. Ca. 100 B.C. - 250 A.D. 8"H. x 9"D.
Private Nevada collection, ex. Dr. David Harner collection, Arkansas,
1950's-1960's, collection # T.41. Exhibited at the
Marjorie Barrick Museum, UNLV, 1980's and early 1990's.
Est. \$750-\$1,000
Closing: Monday, February 26th, 11:38 A.M.



51. Colima Redware Olla with Decorative Nodes
Colima, Mexico. Ca. 100 B.C. - 250 A.D. 7"H. x 12"W.
Private Nevada collection, ex. Dr. David Harner collection, Arkansas,
1950's-1960's, collection # M359. Exhibited at the
Marjorie Barrick Museum, UNLV, early 2000's.
Est. \$800-\$1,200
Closing: Monday, February 26th, 11:40 A.M.



52. Colima Large Mahogany Obsidian Fox Blade
Colima, Mexico. Ca. 100 B.C. - 250 A.D. 15-3/8"L.
Private Nevada collection, ex. Dr. David Harner
collection, Arkansas, 1950's-1960's. Exhibited
at the Marjorie Barrick Museum, UNLV, 1990's.
Est. \$5,000-\$8,000
Closing: Monday, February 26th, 11:42 A.M.



53. Colima Fox Shaped Obsidian Cache Blade
Colima, Mexico. Ca. 100 B.C. - 250 A.D. 6-1/8"L.
Private Nevada collection, ex. Dr. David Harner
collection, Arkansas, 1950's-1960's. Exhibited
at the Marjorie Barrick Museum, UNLV, 1990's.
Est. \$1,200-\$1,800
Closing: Monday, February 26th, 11:44 A.M.



54. Colima Mahogany Obsidian Blade with Handle
Colima, Mexico. Ca. 100 B.C. - 250 A.D. 8"L.
Private Nevada collection, ex. Dr. David Harner
collection, Arkansas, 1950's-1960's. Exhibited at the
Marjorie Barrick Museum, UNLV, 1990's.
Est. \$800-\$1,200
Closing: Monday, February 26th, 11:46 A.M.



55. Colima Obsidian Hooked Spear Blade
Colima, Mexico. Ca. 100 B.C. - 250 A.D. 10-3/4"L.
Private Nevada collection, ex. Dr. David Harner
collection, Arkansas, 1950's-1960's. Exhibited at the
Marjorie Barrick Museum, UNLV, 1990's.
Est. \$1,500-\$2,500
Closing: Monday, February 26th, 11:48 A.M.



56. Colima Mahogany Obsidian Blade
Colima, Mexico. Ca. 100 B.C. - 250 A.D. 7-3/8"L.
Private Nevada collection, ex. Dr. David Harner
collection, Arkansas, 1950's-1960's. Exhibited at the
Marjorie Barrick Museum, UNLV, 1990's.
Est. \$600-\$900
Closing: Monday, February 26th, 11:50 A.M.



57. Colima Obsidian Spear Point
Colima, Mexico. Ca. 100 B.C. - 250 A.D. 7"L.
Private Nevada collection, ex. Dr. David Harner
collection, Arkansas, 1950's-1960's. Exhibited
at the Marjorie Barrick Museum, UNLV, 1990's.
Est. \$400-\$600
Closing: Monday, February 26th, 11:52 A.M.



58. Colima Ceremonial Stone Axe
Colima, Mexico.
Ca. 100 B.C. - 250 A.D. 7-3/8"L. x 3-1/2"W.
Private Nevada collection, ex. Dr. David Harner
collection, Arkansas, 1950's-1960's. Exhibited
at the Marjorie Barrick Museum, UNLV, 1990's.
Est. \$600-\$900
Closing: Monday, February 26th, 11:54 A.M.



59. Colima Obsidian Blade
Colima, Mexico. Ca. 100 B.C. - 250 A.D. 10-1/4"L.
Private Nevada collection, ex. Dr. David Harner
collection, Arkansas, 1950's-1960's. Exhibited
at the Marjorie Barrick Museum, UNLV, 1990's.
Est. \$400-\$600
Closing: Monday, February 26th, 11:56 A.M.



60. Colima Mother & Child Groupings (2)
Colima, Mexico. Ca. 100 B.C.-250 A.D. 3-1/4"H. & 3-5/8"H.
Private Nevada collection, ex. Dr. David Harner collection,
Arkansas, 1950's-1960's, collection #'s WC72; 0988.51 Exhibited
at the Marjorie Barrick Museum, UNLV, early 2000's.
Est. \$600-\$900
Closing: Monday, February 26th, 11:58 A.M.



61. Colima Man with Shark Helmet
Colima, Mexico.
Ca. 100 B.C. - 250 A.D. 4-1/8"H.
Collection of Mary K. F. Leong, WA., acquired from
The Lands Beyond Gallery, NYC, 1970-1980's.
Est. \$300-\$500
Closing: Monday, February 26th, 12:00 Noon



62. Coahuayana Large Standing Figure Holding Plate
Colima, Mexico. Ca. 100 B.C.-250 A.D. 18-5/8"H.
Private Southwestern Collection. Ex. Carolyn and
Walter Foxworth collection, acquired 1960's - 1980's.
Est. \$5,000-\$9,000
Closing: Monday, February 26th, 12:02 P.M.

63. Colima Large Redware Seated Drinker
Colima, Mexico. Ca. 100 B.C.-250 A.D. 15-1/2"H.
Ex. Christie's, NYC, # TF656, lot 133. Ex. collection of
Maria Manetti Shrem and Jan Shrem, acquired prior to 1970.
Est. \$3,000-\$5,000
Closing: Monday, February 26th, 12:04 P.M.

64. Ameca Seated Male with Weapon
Jalisco, Mexico. ca. 100 B.C.-250 A.D. 15-3/4"H.
Collection of Mary K. F. Leong, WA., acquired from
The Lands Beyond Gallery, NYC., 1970's - 1980's.
Est. \$2,500-\$4,500
Closing: Monday, February 26th, 12:06 P.M.



65. Colima Tlaloc Figural Incensario
Colima, Mexico. Ca. 100 B.C.-250 A.D. 17-1/8"H.
Private Nevada collection,
ex. Dr. David Harner collection, Arkansas,
1950's-1960's, collection # BH.03.78. Exhibited
at the Marjorie Barrick Museum, UNLV, 1990's.
Est. \$800-\$1,500
Closing: Monday, February 26th, 12:08 P.M.



66. Colima Large Elaborately Decorated Standing Figure
Colima, Mexico. Ca. 100 B.C.-250 A.D. 21-3/4"H.
Private Nevada collection, ex. Dr. David Harner
collection, Arkansas, 1950's-1960's, collection #
WC103. Exhibited at the Marjorie Barrick
Museum, UNLV, early 2000's.
Est. \$2,000-\$3,000
Closing: Monday, February 26th, 12:10 P.M.



67. Colima Redware Seated Shaman
Colima, Mexico. Ca. 100 B.C. - 250 A.D. 13-1/4"H.
Private Nevada collection, ex. Dr. David Harner
collection, Arkansas, 1950's-1960's, collection
BH.03.199. Exhibited at the Marjorie Barrick
Museum, UNLV, 1990's.
Est. \$1,500-\$2,500
Closing: Monday, February 26th, 12:12 P.M.



68. Colima Redware Figure with Exaggerated Phallus
Colima, Mexico. Ca. 100 B.C. - 250 A.D. 9-1/4"H.
Ex. Osuma Gallery, Santa Barbara, CA.,
acquired early 1980's. Private S. Calif. collection.
Est. \$1,800-\$2,500 Closing: Monday, February 26th, 12:14 P.M.

69. Colima Head Vessel
Colima, Mexico. Ca. 100 B.C. - 250 A.D. 7-1/4"H.
Private Nevada collection, ex. Dr. David Harner collection,
Arkansas, 1950's-1960's, collection # M105.
Exhibited at the Marjorie Barrick Museum, UNLV, 1990's.
Est. \$600-\$900 Closing: Monday, February 26th, 12:16 P.M.

70. Colima Roller Seals (4)
Colima, Mexico. Ca. 100 B.C. - 250 A.D. 2-3/8" to 4-3/8"L.
Private Nevada collection, ex. Dr. David Harner
collection, Arkansas, 1950's-1960's.
Est. \$500-\$800 Closing: Monday, February 26th, 12:18 P.M.





71. Colima Redware Dog
Colima, Mexico. Ca. 100 B.C. - 250 A.D. 9"H. x 13"L.
Private Nevada collection, ex. Dr. David Harner collection, Arkansas,
1950's-1960's, collection # V.89. Exhibited at the
Marjorie Barrick Museum, UNLV, 1980's and late 1990's.
Est. \$1,200-\$1,800
Closing: Monday, February 26th, 12:20 P.M.



72. Colima Redware Grinning Dog
Colima, Mexico. Ca. 100 B.C. - 250 A.D. 8-5/16"H. x 12-3/4"L.
Private Nevada collection, ex. Dr. David Harner collection, Arkansas,
1950's-1960's, collection # WC116; C111. Exhibited at the
Marjorie Barrick Museum, UNLV, 1980's and early 1990's.
Est. \$1,500-\$2,500
Closing: Monday, February 26th, 12:22 P.M.



77. Colima Medium Dog with Bared Teeth
Colima, Mexico. Ca. 100 B.C. - 250 A.D. 6-1/2"H. x 9-1/4"L.
Private Nevada collection, ex. Dr. David Harner collection,
Arkansas, 1950's-1960's, collection # ST54. Exhibited at the
Marjorie Barrick Museum, UNLV, 1980's and late 1990's.
Est. \$800-\$1,200
Closing: Monday, February 26th, 12:32 P.M.



78. Colima Medium Redware Dog
Colima, Mexico. Ca. 100 B.C. - 250 A.D. 7-13/16"H. x 12-3/4"L.
Private Nevada collection, ex. Dr. David Harner collection,
Arkansas, 1950's-1960's. Exhibited at the Marjorie
Barrick Museum, UNLV, 1980's and early 1990's.
Est. \$1,000-\$1,500
Closing: Monday, February 26th, 12:34 P.M.



73. Colima Redware Grinning Dog
Colima, Mexico. Ca. 100 B.C. - 250 A.D. 9"H. x 13"L.
Private Nevada collection, ex. Dr. David Harner collection,
Arkansas, 1950's-1960's, collection # 483. Exhibited at the
Marjorie Barrick Museum, UNLV, 1980's and late 1990's.
Est. \$1,500-\$2,000
Closing: Monday, February 26th, 12:24 P.M.



74. Colima Small Redware Dog with Bared Teeth
Colima, Mexico. Ca. 100 B.C. - 250 A.D. 7-1/4"H. x 11"L.
Private Nevada collection, ex. Dr. David Harner collection,
Arkansas, 1950's-1960's, collection # M86. Exhibited at the
Marjorie Barrick Museum, UNLV, 1980's and early 1990's.
Est. \$1,000-\$1,500
Closing: Monday, February 26th, 12:26 P.M.



79. Colima Redware Dog
Colima, Mexico. Ca. 100 B.C. - 250 A.D. 7"H. x 11"L.
Private Nevada collection, ex. Dr. David Harner collection,
Arkansas, 1950's-1960's. Exhibited at the Marjorie
Barrick Museum, UNLV, 1980's and late 1990's.
Est. \$1,000-\$1,500
Closing: Monday, February 26th, 12:36 P.M.



80. Colima Redware Curled Dog
Colima, Mexico. Ca. 100 B.C. - 250 A.D. 4-5/8"H. x 9"W.
Private Nevada collection, ex. Dr. David Harner collection,
Arkansas, 1950's-1960's, collection # WC123. Exhibited at the
Marjorie Barrick Museum, UNLV, 1980's and early 1990's.
Est. \$800-\$1,200
Closing: Monday, February 26th, 12:38 P.M.



75. Colima Redware Dog with Black Highlights
Colima, Mexico. Ca. 100 B.C. - 250 A.D. 7-7/8"H. x 11-3/4"L.
Private Nevada collection, ex. Dr. David Harner collection,
Arkansas, 1950's-1960's. Exhibited at the Marjorie Barrick
Museum, UNLV, 1980's and late 1990's.
Est. \$800-\$1,200
Closing: Monday, February 26th, 12:28 P.M.



76. Colima Short Redware Dog
Colima, Mexico. Ca. 100 B.C. - 250 A.D. 6-1/4"H. x 9-1/2"L.
Private Nevada collection, ex. Dr. David Harner collection,
Arkansas, 1950's-1960's. Exhibited at the Marjorie
Barrick Museum, UNLV, 1980's and early 1990's.
Est. \$1,000-\$1,500
Closing: Monday, February 26th, 12:30 P.M.



81. Colima Seated Dog
Colima, Mexico. Ca. 100 B.C. - 250 A.D. 8-1/2"H. x 12"L.
Private Nevada collection, ex. Dr. David Harner collection,
Arkansas, 1950's-1960's. Exhibited at the Marjorie
Barrick Museum, UNLV, 1980's and late 1990's.
Est. \$800-\$1,200
Closing: Monday, February 26th, 12:40 P.M.



82. Colima Small Redware Dog
Colima, Mexico. Ca. 100 B.C. - 250 A.D. 5-1/2"H. x 10"L.
Private Nevada collection, ex. Dr. David Harner collection,
Arkansas, 1950's-1960's, collection # AA.16. Exhibited at the
Marjorie Barrick Museum, UNLV, 1980's and late 1990's.
Est. \$600-\$900
Closing: Monday, February 26th, 12:42 P.M.

83. Colima Bare Breasted Lady
West Coast Mexico.
Ca. 100 B.C. - 250 A.D.
13-1/2"H.
Ex. Stendahl Gallery, 1970's.
Private west coast collection.
Est. \$10,000-\$15,000
Closing: Monday,
February 26th,
12:44 P.M.



84. Pihuamo Large Redware Seated Figure with Bowl
Colima, Mexico.
Ca. 100 B.C.-250 A.D.
22-1/2"H.
Private Nevada collection,
ex. Dr. David Harner collection,
Arkansas, 1950's-1960's,
collection # M3. Exhibited at the
Marjorie Barrick Museum, UNLV,
1990s and early 2000's.
Est. \$6,000-\$9,000
Closing: Monday,
February 26th,
12:46 P.M.



85. Monumental Nayarit Matching Pair
Nayarit, Mexico.
Ca. 100 B.C.-250 A.D.
24"H. x 15"W. 23-1/2"H. x 17-1/2"W.
Private Southern California collection,
ex. Meza Family collection, Whittier, CA.,
acquired in the 1960's.
Est. \$25,000-\$35,000
Closing: Monday,
February 26th,
12:48 P.M.



86. Large Jalisco Seated Male & Female Figures
 Jalisco, Mexico.
 Ca. 100 B.C.-250 A.D.
 18-3/4"H. & 20-1/2"H.
 Private Southwestern collection.
 Ex. Meza Family collection, Whittier, CA., acquired 1960's, then by descent.
Est. \$8,000-\$12,000
Closing: Monday, February 26th, 12:50 P.M.



88. Jalisco Large Standing Pair
 San Sebastian, Jalisco, Mexico.
 Ca. 100 B.C.-250 A.D.
 16-1/8"H. & 17-1/8"H.
 Ex. Old Tucson, AZ. collection, acquired 1970's.
 Private S. Calif. collection.
Est. \$4,000-\$6,000
Closing: Monday, February 26th, 12:54 P.M.



87. Ameca Male & Female Seated Couple
 Jalisco, Mexico.
 Ca. 100 B.C.-250 A.D.
 15-3/4"H. & 16-1/2"H.
 Private Southwestern collection, acquired from the Meza Family Collection, Whittier, CA., acquired 1960's, then by descent.
Est. \$6,000-\$9,000
Closing: Monday, February 26th, 12:52 P.M.



89. Jalisco Ball Player
 Jalisco, Mexico. Ca. 100 B.C.-250 A.D. 14-3/8"H.
 Ex. Osuma Gallery, Santa Barbara, CA., acquired early 1980's. Private S. Calif. collection.
Est. \$2,000-\$3,000
Closing: Monday, February 26th, 12:56 P.M.



90. Jalisco Crouching Figure
 Jalisco, Mexico. Ca. 100 B.C.-250 A.D. 7-1/8"H.
 Ex. Clifford Baker collection, San Diego, CA., acquired 1960's. Private S. Calif. collection.
Est. \$1,200-\$1,800
Closing: Monday, February 26th, 12:58 P.M.



91. Jalisco Standing Figure

Jalisco, Mexico. Ca. 100 B.C.-250 A.D. 11-1/4"H.
Ex. Old San Diego Estate collection, acquired 1950's-1960's. Private S. Calif. collection.
Est. \$800-\$1,200

Closing: Monday, February 26th, 1:00 P.M.



92. San Sebastian Sheep Faced Mother & Child

Jalisco, Mexico. Ca. 100 B.C. - 250 A.D. 9-1/2"H.
Albert A. List Family collection, acquired from Andre Emmerich Gallery, NYC., Dec. 1962, with gallery label affixed on base. By descent to current owner.
Est. \$2,000-\$3,000

Closing: Monday, February 26th, 1:02 P.M.



93. Jalisco Bulbous Grayware Figure Playing Flute

Jalisco, Mexico. Ca. 100 B.C.-250 A.D. 13-1/2"H.
Ex. Clifford Baker collection, San Diego, CA., acquired 1960's. Private S. Calif. collection.
Est. \$1,200-\$1,800

Closing: Monday, February 26th, 1:04 P.M.



97. Jalisco Seated Male with Large Bowl

San Sebastian type, Jalisco, Mexico. Ca. 100 B.C. - 250 A.D. 10"H.
Ex. collection of Maurice Shapiro, NYC., acquired 1960's - 1970's, inherited by his sister.
Est. \$1,500-\$2,500

Closing: Monday, February 26th, 1:12 P.M.



98. Jalisco Necklace with Miniature Figures

Jalisco, Mexico. Ca. 100 B.C. - 250 A.D. 20-3/8"L.
Collection of Mary K. F. Leong, WA., acquired from The Lands Beyond Gallery, NYC, 1970-1980's.
Est. \$800-\$1,200

Closing: Monday, February 26th, 1:14 P.M.



94. Jalisco Curled Dog

Jalisco, Mexico. Ca. 100 B.C.-250 A.D. 6-5/7"H. x 11"L.
Collection of Edith and Murray Stein, NYC., acquired 1960's-1970's.
Est. \$500-\$800

Closing: Monday, February 26th, 1:06 P.M.



95. Jalisco Double Dogs with Bowl on Back

Jalisco, Mexico. Ca. 100 B.C. - 250 A.D. 6-5/8"H.
Private Nevada collection, ex. Harmer Rooke Galleries, NYC., item # HR.03.19. Exhibited at the Marjorie Barrick Museum, UNLV, 1990's.
Est. \$500-\$800

Closing: Monday, February 26th, 1:08 P.M.



96. Jalisco Miniature Platform Family Group

Jalisco, Mexico. Ca. 100 B.C. - 250 A.D. 2-1/2"H. x 2-5/8"D.
Collection of Albert J. and Monique Grant, NYC., acquired 1950's-1960's. Item # 350.
Est. \$500-\$1,000

Closing: Monday, February 26th, 1:10 P.M.



99. Chinesco Miniature Seated Figures (2)

Nayarit, Mexico. Ca. 100 B.C. - 250 A.D. 3-1/8" & 3-1/4"H.
Collection of Albert J. and Monique Grant, NYC., acquired 1950's-1960's. Item #'s AXE & XYZ.
Est. \$1,000-\$1,500

Closing: Monday, February 26th, 1:16 P.M.



100. Chinesco Crouching Toad

Nayarit, Mexico. Ca. 100 B.C.- 250 A.D. 5-1/4"H. x 9-1/4"L.
Collection of Edith and Murray Stein, NYC., acquired from The Lands Beyond Gallery, NYC, 1970's.
Est. \$700-\$1,000

Closing: Monday, February 26th, 1:18 P.M.

101. Chinesco Miniature Mothers with Children (2)

Nayarit, Mexico. Ca. 100 B.C. - 250 A.D. 2-1/2" & 3-1/2"H.
Collection of Albert J. and Monique Grant, NYC., acquired 1950's-1960's. Item # 1278 & 9.
Est. \$400-\$600

Closing: Monday, February 26th, 1:20 P.M.

102. Nayarit Seated Figure with Olla

Nayarit, Mexico. Ca. 100 B.C.-250 A.D. 12-1/8"H. Ex. Clifford Baker collection, San Diego, CA., acquired 1960's. Private S. Calif. collection. Est. \$1,600-\$2,500 Closing: Monday, February 26th, 1:22 P.M.



103. Chinesco Large Standing Figure

Nayarit, Mexico. Ca. 100 B.C.-250 A.D. 18"H. Private Nevada collection, ex. Harmer Rooke Galleries, NYC., 1980's. Collection # HR.03.79. Exhibited at Majorie Barrick Museum, UNLV, early 2000's. Est. \$6,000-\$9,000 Closing: Monday, February 26th, 1:24 P.M.



105. Matched Pair of Ixtlan del Rio Figures

Nayarit, Mexico. Ca. 100 B.C. - 250 A.D. 10-1/2"H. & 10-5/8"H. Collection of Mary K. F. Leong, WA., acquired from The Lands Beyond Gallery, NYC., 1970's - 1980's. Est. \$3,000-\$5,000 Closing: Monday, February 26th, 1:28 P.M.



106. Nayarit Orangeware Seated Male & Female Figures

Nayarit, Mexico. Ca. 100 B.C.-250 A.D. 13-1/8"H. & 14"H. Ex. Old Tucson, AZ. collection, acquired 1970's. Private S. Calif. collection. Est. \$3,000-\$5,000 Closing: Monday, February 26th, 1:30 P.M.



104. Chinesco Seated Female Figure

Nayarit, Mexico. Ca. 100 B.C.-250 A.D. 6-3/4"H. Collection of Dr. and Mrs. Sam Sokolov, NYC. Ex. Arte Primitivo, sale # 29, lot 47. Est. \$1,500-\$2,500 Closing: Monday, February 26th, 1:26 P.M.



107. Ixtlan del Rio Seated Pair (2)

Nayarit, Mexico. Ca. 100 B.C.-250 A.D. 7-9/16"H & 7-7/8"H. Collection of Alyce and Jerry Tuttmann, Asbury Park, NJ. Acquired 1950's-1960's. To son by inheritance. Est. \$2,000-\$3,000 Closing: Monday, February 26th, 1:32 P.M.



108. Nayarit Seated Female Figure
Nayarit, Mexico. Ca. 100 B.C. - 250 A.D. 13-5/8"H.
Ex. Clifford Baker collection, San Diego, CA.,
acquired 1960's. Private S. Calif. collection.
Est. \$1,500-\$2,000
Closing: Monday, February 26th, 1:34 P.M.



109. Nayarit Large Sitting Figure
Nayarit, Mexico. Ca. 100 B.C. - 250 A.D. 15-5/8"H.
Ex. Michael Kalman collection, Arcadia, CA.,
acquired 1980's. Private S. Calif. collection.
Est. \$1,200-\$1,800
Closing: Monday, February 26th, 1:36 P.M.



113. Aztec Stone Serpent
Mexico.
Ca. 1200-1450 A.D.
6-3/4"H. x 8"W.
Ex. William Leazer and William
Swann collection, Dallas, TX.,
acquired 1960's-1970.
Est. \$3,000-\$5,000
Closing: Monday,
February 26th,
1:44 P.M.



**110. Nayarit Seated Hunchback
Figure with Spread Legs**
Nayarit, Mexico. Ca. 100 B.C.-250 A.D. 12-1/8"H.
Ex. Old Tucson, AZ. collection, acquired 1970's.
Private S. Calif. collection.
Est. \$1,000-\$1,500
Closing: Monday, February 26th, 1:38 P.M.



111. Nayarit Emaciated Seated Figure
Nayarit, Mexico.
Ca. 100 B.C.-250 A.D. 9-1/2"H.
Collection of Alyce and Jerry Tuttmann, Asbury Park,
NJ. Acquired 1950's-1960's. To son by inheritance.
Est. \$800-\$1,200
Closing: Monday, February 26th, 1:40 P.M.



112. Nayarit Standing Female
Nayarit, Mexico. Ca. 100 B.C. - 250 A.D. 8-3/4"H.
Albert A. List Family collection,
acquired from Andre Emmerich Gallery, NYC.,
Dec. 1962. By descent to current owner.
Est. \$400-\$600
Closing: Monday, February 26th, 1:42 P.M.



114. Huastec Female Figure
Panuco River area. Ca. 200-600 A.D. 4-1/2"H.
Private European collection. Ex. Harmer Rooke Galleries, 1995.
Ex. Arte Primitivo, sale 28, lot 63.
Est. \$800-\$1,200
Closing: Monday, February 26th, 1:46 P.M.



115. Veracruz Figure Fragment
Mexico. Ca. 600-900 A.D. 13-1/8"H.
Ex. Stendhal Galleries, Los Angeles, CA., # 9581,
acquired early 1960's. Private S. Calif. collection.
Est. \$1,600-\$2,500
Closing: Monday, February 26th, 1:48 P.M.

116. Veracruz Standing Deity Figure

Jochin type, Veracruz, Mexico.

Ca. 900-1100 A.D.

28-3/4"H.

Ex. Barry Kernerman collection, Toronto,

Ex. Samuel Dubiner collection, 1970's,

Tel Aviv, Israel.

Est. \$25,000-\$45,000

Closing: Monday,

February 26th,

1:50 P.M.



117. Veracruz Basalt Head Hacha

Veracruz, Mexico.

Ca. 600-900 A.D.

7"H. x 5-1/4"W.

Private FL. collection.

Ex. Barry Kernerman, Toronto,

ex. Samuel Dubiner collection,

Tel Aviv, acquired 1960's.

Est. \$8,000-\$12,000

Closing: Monday,

February 26th,

1:52 P.M.



118. Teotihuacan or Aztec

Huehueteotl Fire God Censor

Mexico.

Ca. 1000-1250 A.D.

15-1/2"H. x 12"W. x 10"D.

Ex. Private estate acquired

in the 1950's, Kensington

estate auction.

Est. \$5,000-\$8,000

Closing: Monday,

February 26th,

1:54 P.M.





119. Veracruz Standing Figure Holding Staff
Veracruz, Mexico. Ca. 600-900 A.D.
12-7/8"H. x 7-1/4"W. Private Nevada collection,
ex. Dr. David Harner collection, Arkansas,
1950's-1960's, collection # M164. Exhibited at the
Marjorie Barrick Museum, UNLV, early 1990's.
Est. \$2,500-\$3,500
Closing: Monday, February 26th, 1:56 P.M.



120. Veracruz Standing Sonriente Figure
Veracruz, Mexico.
Ca. 600-900 A.D. 11-7/8"H.
Collection of Alyce and Jerry Tuttmann,
Asbury Park, NJ. Acquired 1950's-1960's.
To son by inheritance.
Est. \$2,000-\$2,500
Closing: Monday, February 26th, 1:58 P.M.



121. Veracruz Dancer with Helmet
Veracruz, Mexico. Ca. 600-900 A.D.
4-5/8"H. x 4-1/8"W.
Collection of Mary K. F. Leong, WA.,
acquired from The Lands Beyond
Gallery, NYC, 1970-1980's.
Est. \$600-\$900
Closing: Monday, February 26th, 2:00 P.M.



125. El Faisan Large Vessel with Figural Legs
Veracruz, Mexico Ca. 600-900 A.D. 11-3/4"H.
Private Nevada collection, ex. Dr. David Harner
collection, Arkansas, 1950's-1960's, collection
BH.03.137. Exhibited at the Marjorie Barrick
Museum, UNLV, 1990's.
Est. \$1,000-\$1,500
Closing: Monday, February 26th, 2:08 P.M.



122. Teotihuacan Mother & Child and Seated Male Figure (2)
Teotihuacan, Mexico. Ca. 400-600 A.D. 4" & 3-3/4"L.
Collection of Albert J. and Monique Grant, NYC.,
acquired 1950's-1960's. Collection #'s 1070 & 1925.
Est. \$750-\$1,000
Closing: Monday, February 26th, 2:02 P.M.

123. Veracruz Sonriente Heads (2)
Veracruz, Mexico. Ca. 600-900 A.D. 4-1/8"H. & 5-3/4"H.
Collection of Alyce and Jerry Tuttmann, Asbury Park, NJ.
Acquired 1950's-1960's. To son by inheritance.
Est. \$800-\$1,200
Closing: Monday, February 26th, 2:04 P.M.

124. Monte Alban & Veracruz Figures (2)
Oxaca & Veracruz, Mexico. Ca. 400-900 A.D. 5"H. & 5-1/16"H.
Collection of Alyce and Jerry Tuttmann, Asbury Park, NJ.
Acquired 1950's-1960's. To son by inheritance.
Est. \$1,000-\$1,500
Closing: Monday, February 26th, 2:06 P.M.



126. Huastec Zoomorphic Vessel
Panuco River area, Huastec, Mexico.
Ca. 600-900 A.D.
10-1/2"H.
Private Nevada collection,
item # M394. Ex. Arte Primitivo,
ex. Tony and Pura Chen Collection,
acquired 1960's.
Est. \$800-\$1,200
Closing: Monday, February 26th, 2:10 P.M.

127. Huastec Armadillo Vessel
Huastec, Mexico.
Ca. 600-900 A.D.
6-1/8"H.
Private Nevada collection,
ex. Dr. David Harner collection, Arkansas,
1950's-1960's, collection # M188.
Exhibited at the Marjorie Barrick
Museum, UNLV, early 2000's.
Est. \$600-\$900
Closing: Monday, February 26th, 2:12 P.M.

128. Maya Cylinder Vase with Skeleton Motif
Chama type, Maya Regions.
Ca. 500-800 A.D.
6-5/8"H. x 5-1/4"D.
Collection of Nate Tracy, Fl.,
ex. Sotheby's, NYC.
Est. \$7,000-\$9,000
Closing: Monday,
February 26th,
2:14 P.M.



130. Maya Chama Type Cylinder Vase
Maya regions.
Ca. 500-800 A.D.
5-3/4"H. x 7"D.
Ex. Erasmo Toledo
collection, FL.,
acquired from
Foreign Unlimited,
Charles Warren,
FL. early 1970's.
Est. \$4,000-\$6,000
Closing: Monday,
February 26th,
2:18 P.M.



129. Maya Polychrome Decorated Bowl
Maya. Ca. 550-950 A.D. 4-7/8"H. x 6-7/8"D.
Private NYC collection, acquired at Sotheby's, NYC.
Nov. 27, 1984, lot 170.
Ex. Lands Beyond Gallery, NYC.
Est. \$8,000-\$12,000
Closing: Monday,
February 26th,
2:16 P.M.



131. Maya Polychrome Tripod Bowl
Chama type, Maya Regions.
Ca. 500-800 A.D.
3-9/16"H. x 6-5/8"D.
Collection of Nate Tracy, Fl.,
ex. Sotheby's sale # 6778, Nov.
20th 1995, lot # 170.
Est. \$3,000-\$5,000
Closing: Monday,
February 26th,
2:20 P.M.



132. Maya Large Plate with Standing Figure

Maya Regions.
Ca. 500-800 A.D.
3-1/4"H. x 14-1/4"D.
Collection of Mary K. F. Leong, WA.
Ex. The Lands Beyond Gallery, NYC.,
inv. # 3574, acquired 1980's.
Est. \$2,500-\$3,500
Closing: Monday,
February 26th,
2:22 P.M.



136. Maya Medium Sized Bowl

Maya regions.
Ca. 500-800 A.D. 3-7/8"H. x 7-7/8"D.
Private Florida collection, by descent.
Ex. Mark Bash, ex. Foreign
Unlimited Gallery, Charles Warren, Coconut Grove, FL., 1980's.
Est. \$1,500-\$2,500
Closing: Monday, February 26th, 2:30 P.M.



137. Maya Cylinder Vase with Images of Elites

Maya Regions. Ca. 500-800 A.D. 8-5/8"H. x 4-1/2"D.
Private Nevada collection, acquired from Robert
Stolper, Bath, England, mid 1980's. Collection # B260;
1225; 86.6.1; 12811RS 6-53. Exhibited at the Marjorie
Barrick Museum, UNLV, 1980s and early 2000's.
Est. \$2,500-\$3,500
Closing: Monday, February 26th, 2:32 P.M.



133. Maya Tetrapod Vessel

Maya areas. Early classic, ca. 600-800 A.D. 6-7/8"H. x 10-15/16"D.
Private Nevada collection, acquired from Arte Primitivo Gallery,
under Mildred Kaplan, 1980's. Item # 1244; C-11 262 B.
Exhibited at the Marjorie Barrick Museum, UNLV, 1980's.
Est. \$2,000-\$3,000 Closing: Monday, February 26th, 2:24 P.M.



134. Maya Orangeware Tripod Bowl with Glyph Band

Maya areas. Ca. 600-800 A.D. 5-5/8"H. x 7-1/8"D.
Private Nevada collection, acquired from Arte Primitivo Gallery,
under Mildred Kaplan, 1980s. Item # 90.8. Exhibited at the
Marjorie Barrick Museum, UNLV, 1980's and late 1990's.
Est. \$2,000-\$3,000 Closing: Monday, February 26th, 2:26 P.M.

135. Maya Polychrome Decorated Bowl

Maya regions. Ca. 500-800 A.D. 4-7/8"H. x 7"W.
Private Nevada collection, acquired from Arte Primitivo Gallery,
under Mildred Kaplan, 1980's. Item #'s MK02831; 1233.
Exhibited at the Marjorie Barrick Museum, UNLV, late 1990's.
Est. \$800-\$1,200 Closing: Monday, February 26th, 2:28 P.M.



138. Copador Cylinder Vase with Dignitaries & Glyphs

Honduras. Ca. 500-800 A.D.
7-1/2"H. x 5-3/8"W. Private Nevada collection,
ex. Dr. David Harner collection, Arkansas,
1950's-1960's, collection # B261: 1906.
Exhibited at the Marjorie Barrick
Museum, UNLV, 1990's.
Est. \$2,500-\$3,500
Closing: Monday, February 26th, 2:34 P.M.



139. Maya Large Cylinder Vase with Processional Figures

Ulua Valley, Honduras.
Ca. 500-800 A.D. 8-1/2"H. x 6-7/8"W.
Private Nevada collection, ex. Alan Rosen, collection
AR7832; 1899. Exhibited at the Marjorie Barrick
Museum, UNLV, late 1990's.
Est. \$1,800-\$3,000
Closing: Monday, February 26th, 2:36 P.M.



140. Maya Orangeware Vase

Yucatan region. Ca. 500-800 A.D. 7"H.
Private Nevada collection,
acquired from Robert Stolper, Bath,
England, mid 1980's. Collection #'s 12816RS
& 1252; 6353. Exhibited at the Marjorie
Barrick Museum, UNLV, 1980's.
Est. \$600-\$900
Closing: Monday, February 26th, 2:38 P.M.



141. Maya Portrait Head Poison Vessel
 Maya regions. Ca. 500-800 A.D. 3-1/2"H.
 Private CA. collection. Ex. Bernal
 Family collection, acquired 1960's.
 Est. \$600-\$900
 Closing: Monday, February 26th, 2:40 P.M.



142. Maya Eccentric Flint
 Central America.
 Ca. 500-800 A.D. 5-3/4"H.
 Ex. estate of Joseph G. Gerena, NYC.
 Est. \$3,000-\$5,000
 Closing: Monday, February 26th, 2:42 P.M.



143. Maya Stone Head Hacha
 Maya regions. Ca. 600-900 A.D. 5-1/2"H.
 Collection of Swanhild Castle,
 Brooklyn, NY., acquired 1960's.
 Est. \$600-\$900
 Closing: Monday, February 26th, 2:44 P.M.



147. Costa Rican Animal Mace Heads (2)
 Costa Rica. Ca. 500-1000 A.D. 2-5/8"W. & 2-3/4"W.
 Private Nevada collection, ex. Alan Rosen, 1980's,
 collection # CR24 & no #.
 Est. \$600-\$900
 Closing: Monday, February 26th, 2:52 P.M.



148. Maya Jade Face Pendant
 Maya Regions. Ca. 500-800 A.D.
 1-7/8"H. x 1-1/8"W.
 Collection of Nate Tracy, Fl., ex. Sotheby's, NYC.
 Est. \$4,000-\$5,000
 Closing: Monday, February 26th, 2:54 P.M.



144. Maya Skeletal Vessel
 El Salvador / Honduras border region. Ca. 500-800 A.D. 6-1/2"H. x 10-1/2"D.
 Private Southwestern collection. Ex. Bernal Family collection, acquired 1960's.
 Est. \$2,500-\$3,500
 Closing: Monday, February 26th, 2:46 P.M.



145. Maya Plumbate Deity Vessel
 Maya Regions. Ca. 500-800 A.D. 6-1/2"H.
 Private Nevada collection, ex. Harmer Rooke Galleries, NYC., 1980's. Collection
 # HR01.20. Exhibited at Majorie Barrick Museum, UNLV, 1990's and early 2000's.
 Est. \$500-\$800
 Closing: Monday, February 26th, 2:48 P.M.

146. Maya Orangeware Vessel with Glyph Panels
 Maya regions. Ca. 500-800 A.D. 2-1/2"H.
 Ex. Erasmo Toledo collection, FL., acquired from Foreign Unlimited,
 Charles Warren, FL. early 1970's.
 Est. \$600-\$900
 Closing: Monday, February 26th, 2:50 P.M.



149. Maya Carved Shell Pendants (2)
 Maya. Ca. 500-800 A.D. 1-5/8"L.
 Ex. Erasmo Toledo collection, FL.,
 acquired from Foreign Unlimited,
 Charles Warren, FL. early 1970's.
 Est. \$600-\$900
 Closing: Monday, February 26th, 2:56 P.M.



150. Costa Rican Mace Head
 Costa Rica. Ca. 500-1000 A.D. 2"H. x 3"L.
 Collection of Swanhild Castle, Brooklyn, NY.,
 acquired 1960's. Old tag on base: Brilar
 Carrousel Works, NY. Larry Laurenio.
 Est. \$400-\$600
 Closing: Monday, February 26th, 2:58 P.M.

151. Maya Polished Obsidian Cinnabar Pot
Maya Regions.
Ca. 600-800 A.D.
2-7/8"H. with lid.
New Jersey collection,
ex. private Los Angeles
collection, acquired about
1980 from Foreign
Unlimited, FL.
Est. \$5,000-\$8,000
Closing: Monday,
February 26th,
3:00 P.M.



152. Maya Speckled Granite Zoomorphic Hacha
Maya Regions.
Ca. 500-800 A.D.
8-1/2"H. x 10"W.
Ex. Erasmo Toledo collection,
FL., acquired from Foreign
Unlimited, Charles Warren,
FL. early 1970's.
Est. \$3,000-\$5,000
Closing: Monday,
February 26th,
3:02 P.M.



153. Maya Ball Court Marker with Skull Trophy
Toltec-Maya. Post Classic Period, ca. 900-1200 A.D. 12"W. x 2-1/4"D.
Private American collection. Deaccessioned from the Los Angeles County
Museum, # 8697. Art Loss Register certificate # 8708(22).AR.
Est. \$15,000-\$25,000
Closing: Monday, February 26th, 3:04 P.M.



154. Cocle Decorated Plate
 Conte type, Central region, Panama. Ca. 600-800 A.D. 1-7/8"H. x 11-1/2"D.
 Private Chicago collection, acquired from Royce Hubert, 1980's.
 Est. \$1,200-\$1,800
 Closing: Monday, February 26th, 3:06 P.M.



155. Cocle Decorated Bowl
 Conte type, Central region, Panama. Ca. 600-800 A.D. 3-3/8"H. x 9-7/8"D.
 Private Chicago collection, acquired from Royce Hubert, 1980's.
 Est. \$800-\$1,200
 Closing: Monday, February 26th, 3:08 P.M.



160. Cocle Large Decorated Amphora
 Conte type, Central region, Panama. Ca. 600-800 A.D. 11-3/4"H.
 Private Chicago collection, acquired from Royce Hubert, 1980's.
 Est. \$1,000-\$1,500 Closing: Monday, February 26th, 3:18 P.M.



161. Cocle Decorated Amphora
 Conte type, Central region, Panama. Ca. 600-800 A.D. 8-3/4"H.
 Private Chicago collection, acquired from Royce Hubert, 1980's.
 Est. \$1,000-\$1,500 Closing: Monday, February 26th, 3:20 P.M.



156. Cocle Decorated Plate
 Conte type, Central region, Panama. Ca. 600-800 A.D. 2-7/8"H. x 10-5/8"D.
 Private Chicago collection, acquired from Royce Hubert, 1980's.
 Est. \$800-\$1,200
 Closing: Monday, February 26th, 3:10 P.M.



157. Cocle Decorated Plate
 Conte type, Central region, Panama. Ca. 600-800 A.D. 2-1/2"H. x 10-5/8"W.
 Private Chicago collection, acquired from Royce Hubert, 1980's.
 Est. \$800-\$1,200
 Closing: Monday, February 26th, 3:12 P.M.



162. Cocle Decorated Olla
 Macaracas type, Central region, Panama. Ca. 800-1000 A.D. 6-1/4"H.
 Private Chicago collection, acquired from Royce Hubert, 1980's.
 Est. \$900-\$1,300
 Closing: Monday, February 26th, 3:22 P.M.



163. Cocle Decorated Olla
 Macaracas type, Central region, Panama. Ca. 800-1000 A.D. 4-7/8"H.
 Private Chicago collection, acquired from Royce Hubert, 1980's.
 Est. \$600-\$900
 Closing: Monday, February 26th, 3:24 P.M.



158. Cocle Decorated Plate
 Macaracas type, Central region, Panama.
 Ca. 800-1000 A.D. 1-1/2"H. x 8-1/4"D.
 Private Chicago collection, acquired from Royce Hubert, 1980's.
 Est. \$600-\$900
 Closing: Monday, February 26th, 3:14 P.M.



159. Cocle Decorated Olla
 Conte type, Central region, Panama.
 Ca. 600-800 A.D. 6"H.
 Private Chicago collection, acquired from Royce Hubert, 1980's.
 Est. \$900-\$1,300
 Closing: Monday, February 26th, 3:16 P.M.



164. Cocle Decorated Olla
 Macaracas type, Central region, Panama. Ca. 800-1000 A.D. 5"H.
 Private Chicago collection, acquired from Royce Hubert, 1980's.
 Est. \$600-\$900
 Closing: Monday, February 26th, 3:26 P.M.



165. Cocle Decorated Olla
 Macaracas type, Central region, Panama. Ca. 800-1000 A.D. 4-3/4"H.
 Private Chicago collection, acquired from Royce Hubert, 1980's.
 Est. \$600-\$900
 Closing: Monday, February 26th, 3:28 P.M.

166. La Tolita-Tumaco Large Partial Gold Bowl
 Colombia-Ecuador border area.
 Ca. 100-500 A.D. 7-1/4"D. x 5"H. 194 gms. 6.8 oz.
 Acquired by descent and brought to the US in 1970.
 Originally from an old Spanish family collection, Guayaquil,
 Ecuador, 1920-1970.
Est. \$12,000-\$15,000
Closing: Monday,
February 26th,
3:30 P.M.



167. Narino Gold Ear Ornaments with Monkeys
 Colombia. Ca. 1000 A.D. 3"D. each. 37 gms. total wt.
 Private AZ. collection, acquired Barbara Johnson Estate,
 Princeton, NJ., 1960's.
Est. \$4,000-\$6,000
Closing: Monday,
February 26th,
3:32 P.M.



168. Veraguas Gold Eagle Pendant
 Panama. Ca. 800-1200 A.D. 1-1/2"L. x 1-3/4"W. 15 gms.
 Collection of Mary K. F. Leong, WA., acquired from
 The Lands Beyond Gallery, NYC, 1970-1980's.
Est. \$2,500-\$3,500
Closing: Monday, February 26th, 3:34 P.M.



169. Tairona Gold Frog
 Columbia. Ca. 800-1200 A.D. 5/8"H. x 1-1/8"W. 7 gms.
 Collection of Mary K. F. Leong, WA., acquired from
 The Lands Beyond Gallery, NYC, 1970-1980's.
Est. \$1,200-\$1,800
Closing: Monday, February 26th, 3:36 P.M.



170. Sican/Chimu Gold Face Pendants (2)
 Ca. 1000-1250 A.D. 2"H. x 2"W.
 Ex. Splendors of the World Gallery, Santa Fe, NM.
Est. \$2,500-\$3,500
Closing: Monday, February 26th, 3:38 P.M.



171. Chavin Matching Pair Gold Ear Ornaments
 Ca. 200 B.C.-200 A.D. 2-7/8"L. each.
 Ex. Splendors of the World Gallery, Santa Fe, NM.
Est. \$1,500-\$2,500
Closing: Monday, February 26th, 3:40 P.M.



172. Sinu Pair of Gold Ear Ornaments
 Colombia. Ca. 500-1000 A.D. 1"L. x 3/4"W.
 Collection of Mary K. F. Leong, WA., acquired from
 The Lands Beyond Gallery, NYC, 1970-1980's.
Est. \$600-\$900
Closing: Monday, February 26th, 3:42 P.M.



173. Costa Rican Gold Horned Figure
 Costa Rica. Ca. 500-1000 A.D. 1-7/8"L. 5 gms.
 Private Nevada collection, ex. Harmer Rooke Galleries, NYC., 1980's.
 Exhibited at Majorie Barrick Museum, UNLV, 1990's.
Est. \$800-\$1,200
Closing: Monday, February 26th, 3:44 P.M.



174. Quimbaya Figure with Gold Nosering
Columbia. Ca. 500-1000 A.D. 8-3/8"H. x 6-3/4"W.
Collection of Mary K. F. Leong, WA., acquired from
The Lands Beyond Gallery, NYC., 1970's.
Est. \$1,200-\$1,800
Closing: Monday, February 26th, 3:46 P.M.



175. Narino Decorated Iguana Bowl
Colombia. Ca. 1200-1400 A.D. 3-1/8"H. x 8-5/8"D.
Private Nevada collection, ex. Alan Rosen, collection # 4817R.
Exhibited at the Marjorie Barrick Museum, UNLV, 1980's.
Est. \$400-\$600
Closing: Monday, February 26th, 3:48 P.M.



176. Moche Seated Inlaid Figure
Moche. Ca. 200 A.D. 6"H. Private Nevada collection,
acquired from Ed Davies, Long Beach, CA., mid 1980's, collection
ED89.1. Exhibited at Majorie Barrick Museum, UNLV, 1990's.
Est. \$1,000-\$1,500
Closing: Monday, February 26th, 3:50 P.M.



177. Vicus Double Lobe Figural Vessel
Vicus. Ca. 200 B.C.-200 A.D. 8"H. x 11"L.
Private Chicago collection, acquired from Bettina
Schwimmer, Chicago, 1980's.
Est. \$3,000-\$5,000
Closing: Monday, February 26th, 3:52 P.M.

178. Tairona Gold Labret with Obsidian Backing
Tairona, Colombia. Ca. 800-1500 A.D. 1-7/8" overall length.
8 grams total gold only weight.
Ex. collection of Maurice Shapiro, NYC.,
acquired 1960's - 1970's, inherited by his sister.
Est. \$1,800-\$2,500
Closing: Monday, February 26th, 3:54 P.M.



181. Moche/Chimu Gold Sun Face Dangles (2)
Ca. 1000-1250 A.D. 1-3/4"L. each.
Ex. Splendors of the World Gallery, Santa Fe, NM.
Est. \$1,500-\$2,500
Closing: Monday, February 26th, 4:00 P.M.

182. Moche/Chimu Waterbird Decorated Gold Disc
Ca. 1000-1250 A.D. 3"D.
Ex. Splendors of the World Gallery, Santa Fe, NM.
Est. \$1,800-\$2,500
Closing: Monday, February 26th, 4:02 P.M.

183. Moche Gold Depilatory Tweezers (3)
Moche. Ca. 300-600 A.D. 1"L. & 1-7/8"L. & 2"L. 22 gms. total wt.
Ex. Hard collection, San Diego, CA., 1970's.
Ex. Splendors of the World Gallery, Santa Fe, NM.
Est. \$1,500-\$2,500
Closing: Monday, February 26th, 4:04 P.M.



179. Moche Deity with Jaguar Headdress Tumi
Ca. 500-1000 A.D. 3-7/8"H.
Ex. Dr. Alan Fleischer Collection, NYC,
acquired 1970's-1990's.
Est. \$1,500-\$2,500
Closing: Monday,
February 26th, 3:56 P.M.



180. Moche Warrior with Danglers Tumi
Peru. Ca. 500-1000 A.D. 7-3/4"H.
Ex. Dr. Alan Fleischer Collection, NYC,
acquired 1970's-1990's.
Est. \$2,000-\$3,000
Closing: Monday,
February 26th, 3:58 P.M.





184. Chavin Temple Model Vessel
 Ca. 1000-400 B.C. 11"H.
 Sold for the benefit of The Everson Museum of Art,
 Syracuse, NY., gift of Lee Barash of NYC.
Est. \$1,200-\$1,800
Closing: Monday, February 26th, 4:06 P.M.



185. Chimu/Inca Silver Pins (4)
 Ca. 1000-1500 A.D. 9"L. 45 gms. total wt.
 Ex. Jerrie Cobb collection, FL., acquired
 1970's - 1980's, item # 804.
Est. \$600-\$900
Closing: Monday, February 26th, 4:08 P.M.



186. Moche Warrior & Stirrup Vessel Tumi
 Peru. Ca. 500-1000 A.D. 9-1/2"H.
 Ex. Dr. Alan Fleischer Collection, NYC, acquired
 1970's-1990's.
Est. \$2,000-\$3,000
Closing: Monday, February 26th, 4:10 P.M.



190. Moche Copper Tumi with Figures & Parrot
 Moche. Ca. 500-1000 A.D. 6-1/8"L. x 5-9/16"W.
 Private Nevada collection, acquired from Ed Davies, Long Beach,
 CA., mid 1980's, collection # ED893. Exhibited at
 Majorie Barrick Museum, UNLV, early 1990's.
Est. \$1,000-\$1,500
Closing: Monday, February 26th, 4:18 P.M.



191. Moche Copper Tumi with Spotted Jaguar
 Moche. Ca. 500-1000 A.D. 5-3/8"L. x 4-3/8"W.
 Private Nevada collection, ex. Harmer Rooke
 Galleries, NYC., 1980's. Exhibited at
 Majorie Barrick Museum, UNLV, 1990's.
Est. \$600-\$900
Closing: Monday, February 26th, 4:20 P.M.



187. Viru of Warrior with Shield
 Vicus. Ca. 200 B.C.-200 A.D. 8-1/2"H. x 8-1/2"L.
 Private Chicago collection, acquired from
 Bettina Schwimmer, Chicago, 1980's.
Est. \$2,500-\$3,500 **Closing: Monday, February 26th, 4:12 P.M.**



188. Chavin Gold over Copper Jaguar Discs (5)
 Ca. 200 B.C. 1-3/4"D. each. 10-1/2" x 7-1/2" frame.
 Private AZ. collection, acquired from
 Splendors of the World Gallery, Santa Fe, NM.
Est. \$8,000-\$12,000
Closing: Monday, February 26th, 4:14 P.M.



189. Chavin Large Lapis Fish Pendants (4)
 Ca. 400-200 B.C. 1-7/8" to 2"L.
 Ex. Splendors of the World Gallery, Santa Fe, NM.
Est. \$1,200-\$1,800
Closing: Monday, February 26th, 4:16 P.M.



192. Chimu Beaded Necklace with Silver Birds
 Ca. 1000-1250 A.D. 16"L.
 Ex. Splendors of the World Gallery,
 collection # MJ018.
Est. \$1,000-\$1,500
Closing: Monday, February 26th, 4:22 P.M.

193. Moche Skeleton Playing Drum Vessel
 Moche. Ca. 500-800 A.D. 8-7/8"H.
 Ex. Clifford Baker collection, San Diego, CA.,
 acquired 1960's. Private S. Calif. collection.
Est. \$1,200-\$1,800
Closing: Monday, February 26th, 4:24 P.M.

194. Nazca Globular Vessel
 Nazca. Ca. 0-600 A.D. 6-1/4"H. x 7-1/2"W.
 Private Chicago collection,
 Ex. Sotheby's Arcade, NYC.
Est. \$1,000-\$1,500
Closing: Monday, February 26th, 4:26 P.M.





195. Nazca Miniature Figural Vessel
Nazca. Ca. 0-600 A.D. 3-5/8"H.
Collection of Swanhild Castle, Brooklyn, NY.,
acquired 1960's.
Est. \$500-\$800
Closing: Monday, February 26th, 4:28 P.M.



196. Inca Agave Blackware Bottle
Ca. 1000-1425 A.D. 7-1/4"H.
Private Nevada collection, acquired from
Ed Davies, Long Beach, CA., mid 1980's,
collection # ED863. Exhibited at Majorie Barrick
Museum, UNLV, early 1990's.
Est. \$800-\$1,200
Closing: Monday, February 26th, 4:30 P.M.



197. Moche Man with Cat Vessel
Phase IV. Ca. 400-700 A.D. 8-3/8"H.
Private Chicago collection, acquired from
Royce Hubert, 1980's.
Est. \$1,500-\$2,500
Closing: Monday, February 26th, 4:32 P.M.



**201. Chancay Matched Pair of
Medium Cuchimilco Figures**
Chancay. Ca. 1000-1250 A.D.
17-3/4"H. & 18"H.
Private Danish collection,
acquired 1970's.
Est. \$2,500-\$3,500
Closing: Monday,
February 26th,
4:40 P.M.



198. Nazca Small Figural Vessel
Nazca. Ca. 0-600 A.D. 5"H. x 5-1/4"D.
Collection of Swanhild Castle, Brooklyn, NY., acquired 1960's.
Est. \$500-\$800
Closing: Monday, February 26th, 4:34 P.M.



199. Nazca Fantastic Being & Trophy Head Olla
Nazca. Ca. 400-800 A.D. 6-1/2"H. x 7-1/2"W.
Sold for the benefit of The Everson Museum of Art, Syracuse, NY,
gift of Lee Barash of NYC.
Est. \$600-\$900
Closing: Monday, February 26th, 4:36 P.M.



200. Nazca Lentoid Vessel
Nazca. Ca. 0-600 A.D. 7"H.
Private Chicago collection, acquired 1980's from
Bettina Schwimmer, Chicago, 1980's.
Est. \$600-\$900
Closing: Monday, February 26th, 4:38 P.M.



202. Chancay Plump Female Cuchimilco
Chancay.
Ca. 1000-1425 A.D. 19"H.
Private Danish collection, acquired 1970's.
Est. \$2,500-\$3,500
Closing: Monday, February 26th, 4:42 P.M.



203. Chancay Anthropomorphic China
Chancay.
Ca. 800-1200 A.D. 15"H.
Private Danish collection, acquired 1970's.
Est. \$1,000-\$1,500
Closing: Monday, February 26th, 4:44 P.M.



204. Chancay Large Standing Cuchimilco Figure
Chancay. Ca. 800-1200 A.D. 23-1/2"H.
Collected by Maria Ines de Uribe Larrea, NYC.,
by descent to present owner.
Est. \$2,000-\$3,000
Closing: Monday, February 26th, 4:46 P.M.



205. Inca Stone Canopa

Inca. Ca. 1400-1532 A.D. 3-1/2"H. x 4-1/4"L.
Sold for the benefit of The Everson Museum of Art, Syracuse, NY,
gift of Lee Barash of NYC.

Est. \$600-\$900

Closing: Monday, February 26th, 4:48 P.M.

206. Tiahuanaco Jug with Geometric Designs

Bolivia. Inca period, ca. 1000-1200 A.D. 6-3/8"H.
Private Nevada collection, ex. Harmer Rooke Galleries, NYC., 1980's.
Exhibited at Majorie Barrick Museum, UNLV, 1990's.

Est. \$600-\$900

Closing: Monday, February 26th, 4:50 P.M.

207. Chancay Lidded Weaving Basket with Contents

Ca. 1000-1425 A.D. 13-1/4"L. x 5-1/4"W.
Ex. Steve Parmer collection, acquired from R.G. Munn Auctions.

Est. \$1,200-\$1,800

Closing: Monday, February 26th, 4:52 P.M.



209. Marajo Decorated Tanga

Marajo Island, Para Brazil. Ca. 500-1500 A.D. 3-3/4"H. x 5-3/8"W.
Ex. Jean-Eugene Lions collection, Geneva, Switzerland,
collection # 2211. Acquired 1980's.

Est. \$1,500-\$2,500

Closing: Monday, February 26th, 4:56 P.M.



208. Marajoara Tanga

Marajo Island, Para, Brazil. Ca. 400-1300 A.D. 7-1/4"W. x 4-5/8"H.
Ex. Jean-Eugene Lions Collection, Geneva,
Switzerland, acquired 1960's.

Est. \$1,200-\$1,500

Closing: Monday, February 26th, 4:54 P.M.



210. Huari Pile Textile Panels (3)

Coastal Huari. Ca. 500-700 A.D.
3-1/2"H. x 4-1/4" to 4-3/4"L. each panel.
Ex. Arte Primitivo, NYC., 414. Ex. Primitive Arts Gallery, Tuscon, AZ.

Est. \$2,000-\$3,000

Closing: Monday, February 26th, 4:58 P.M.

211. Huari Textile Panel

Middle Horizon, ca. 600-1000 A.D. 3-7/8" x 34-1/4"L.
Ex. Jean-Eugene Lions collection, Geneva, Switzerland.
Item # 1515. Acquired 1980's.

Est. \$2,500-\$3,500

Closing: Monday, February 26th, 5:00 P.M.

212. Huari Textile Tassel

Coastal Huari. Ca. 600-800 A.D.
14-1/2"L. 20-1/2"L. x 5-1/2"W. frame.
Collection of Swanhild Castle, Brooklyn, NY., acquired 1960's.

Est. \$300-\$500

Closing: Monday, February 26th, 5:02 P.M.



213. Chancay Late Horizon Poncho

Chancay. Late Horizon period,
ca. 1000-1250 A.D.
50"W. x 40"H.
Ex. Edythe Shulman
Collection, Boston, MA.,
acquired 1950's-1960's, then
by descent, 1989. Exhibited:
Origins Gallery, Newbery St.,
Boston, between 1959-1970.

Gallery records, gifted to
Smithsonian Archives.

Est. \$3,000-\$5,000

Closing: Monday,
February 26th, 5:04 P.M.



214. Khmer Stone Bust of Maitreya
Cambodia.
Ca. 10th-11th century A.D.
14"H. x 10"W.
Collection of Miriam and
Dr. Eugene Halpert,
Great Neck, NY.
Acquired from Frank Caro Co.,
NYC, May 25th, 1978.
Est. \$7,000-\$10,000
Closing: Monday,
February 26th,
5:06 P.M.



215. Gandharan Stucco Head
Afghanistan. Ca. 3rd-4th century A.D.
8"H. x 5-1/2"W.
Collection of Howard Kaminsky, NYC.,
acquired from Mythological Art, NYC,
(Abram Epstein), July 20th, 1992,
with original correspondence.
Est. \$5,000-\$8,000
Closing: Monday,
February 26th,
5:08 P.M.



216. Ming Seated Buddha
China. Ca. 1368-1644 A.D. 8-3/4"H.
Collection of Swanhild Castle, Brooklyn, NY., acquired 1960's.
Est. \$700-\$1,000
Closing: Monday, February 26th, 5:10 P.M.



217. Ming Bronze Seated Figure
China. Ca. 1368-1644 A.D. 9-1/8"H.
Collection of Swanhild Castle, Brooklyn, NY., acquired 1960's.
Est. \$700-\$1,000
Closing: Monday, February 26th, 5:12 P.M.



218. Large Blanc-de-Chine Figure
China. Late 19th - early 20th century.
14-1/2"H.
Collection of Swanhild Castle,
Brooklyn, NY., acquired 1960's.
Est. \$600-\$900
Closing: Monday, February 26th, 5:14 P.M.



219. Blanc-de-Chine Kwan Yin
China.
Ca. 19th-20th century. 12"H.
Collection of Swanhild Castle,
Brooklyn, NY., acquired 1960's.
Est. \$500-\$800
Closing: Monday, February 26th, 5:16 P.M.



220. Blanc-de-Chine Figures (2)
China. Late 19th - early 20th century.
5-1/4"H. & 6-1/8"H.
Collection of Swanhild Castle,
Brooklyn, NY., acquired 1960's.
Est. \$500-\$800
Closing: Monday, February 26th, 5:18 P.M.



221. Haniwa Terracotta Hen
 Japan. Kofun Period, ca. 300-600 A.D. 10"H.
 Ex. collection of Maurice Shapiro, NYC.,
 acquired 1960's - 1970's, inherited by his sister.
 Est. \$1,200-\$1,800
 Closing: Monday, February 26th, 5:20 P.M.



222. Haniwa Terracotta Head
 Japan. Kofun Period, ca. 300-600 A.D. 12"H.
 Ex. collection of Maurice Shapiro, NYC.,
 acquired 1960's - 1970's, inherited by his sister.
 Est. \$1,000-\$1,500
 Closing: Monday, February 26th, 5:22 P.M.



225. Gandharan Schist Frieze Fragment
 Afghanistan.
 Ca. 2nd-4th century A.D.
 6-1/4"H. x 6-1/2"W.
 Collection of Howard Kaminsky, NYC.,
 acquired 1980's.
 Est. \$1,800-\$2,500
 Closing: Monday,
 February 26th,
 5:28 P.M.



226. Indian and Tibetan Plaques (2)
 India and Tibet. Late 19th - early 20th century.
 5-3/8"H. x 4-5/8"W. 7"H. x 5-1/4"W.
 Ex. collection of Maurice Shapiro, NYC.,
 acquired 1960's - 1970's, inherited by his sister.
 Est. \$500-\$800
 Closing: Monday, February 26th, 5:30 P.M.



227. Burmese Wood Buddhas (2)
 Burma. Ca. 19th century. 9-1/4"H. & 9-5/8"H.
 Collection of Swanhild Castle,
 Brooklyn, NY., acquired 1960's.
 Est. \$500-\$800
 Closing: Monday, February 26th, 5:32 P.M.



223. Han Dynasty Small Vessel
 China. Han Dynasty, 206 B.C. - 220 A.D.
 5-7/8"H. x 5-3/4"W.
 Collection of Mary K. F. Leong, WA., 1970's - 1980's.
 Est. \$700-\$1,000
 Closing: Monday, February 26th, 5:24 P.M.



224. Large Chinese Stone Head
 China. Ca. 20th century or earlier. 18"H. x 12"D.
 Est. \$1,000-\$2,000
 Closing: Monday, February 26th, 5:26 P.M.



228. Japanese Bronze Demon Figure & Filling Vessel (2)
 Japan. Ca. 19th century.
 1/2"H. x 3-1/4"L. (vessel) 2-1/4"H. (demon)
 Collection of Mary K. F. Leong, WA.,
 1970's - 1980's.
 Est. \$600-\$900
 Closing: Monday, February 26th, 5:34 P.M.

229. Burmese Reclining Buddha
 Burma. Late 19th to early 20th century.
 4-5/8"H. x 8-1/8"L.
 Collection of Swanhild Castle,
 Brooklyn, NY., acquired 1960's.
 Est. \$500-\$800
 Closing: Monday, February 26th, 5:36 P.M.



230. Tibetan Seated Buddha
Tibet. Ca. 18th-19th century. 6-1/4"H.
Collection of Swanhild Castle,
Brooklyn, NY., acquired 1960's.
Est. \$800-\$1,200
Closing: Monday, February 26th, 5:38 P.M.



231. Indian Bronze Figure & Burmese Buddha (2)
China and India. Ca. 17th and 19th century.
3-3/4"H. (buddha) 12-1/2"H. (figure)
Collection of Swanhild Castle,
Brooklyn, NY., acquired 1960's.
Est. \$600-\$900
Closing: Monday, February 26th, 5:40 P.M.



232. Tibet Tsong Kapa Buddha
Tibet. Ca. 19th century. 7-1/4"H.
Collection of Swanhild Castle,
Brooklyn, NY., acquired 1960's.
Est. \$500-\$800
Closing: Monday, February 26th, 5:42 P.M.



236. Korean Bowl
Korea. Ca. 12th-15th century A.D. 4-1/4"H.
NYC collection, acquired at Sotheby's, NYC.,
sale 1515, 9/20/95.
Est. \$800-\$1,200
Closing: Monday, February 26th, 5:50 P.M.

237. Korean Celadon Bowl
Korea. Ca. 12th century A.D. 3"H. x 8"D.
NYC collection, acquired at Sotheby's, NYC., 1995.
Est. \$1,000-\$1,500
Closing: Monday, February 26th, 5:52 P.M.

238. Korean Celadon Bowl
Korea. Ca. 12th century A.D. 2-1/4"H. x 6-1/4"D.
NYC collection, acquired at Sotheby's, NYC.,
1995, lot 1515.
Est. \$1,000-\$1,500
Closing: Monday, February 26th, 5:54 P.M.



233. Burmese Marble Buddha
Burma. Ca. 19th century or earlier. 6-1/8"H.
Collection of Swanhild Castle,
Brooklyn, NY., acquired 1960's.
Est. \$400-\$600
Closing: Monday, February 26th, 5:44 P.M.



234. Burmese Marble Buddha
Burma. Early 20th century. 9-5/8"H.
Collection of Swanhild Castle,
Brooklyn, NY., acquired 1960's.
Est. \$600-\$900
Closing: Monday, February 26th, 5:46 P.M.



235. Ban Chieng Pedestal Bowl
Thailand. Ca. 500-300 B.C. 8-5/8"H.
Collection of Edith and Murray Stein, NYC.,
acquired 1960's-1970's.
Est. \$600-\$900
Closing: Monday, February 26th, 5:48 P.M.



239. Large Wood Balinese Guardian Garuda
Indonesia. 25-1/2"H. 28"W.
Collection of Mary K. F. Leong, WA.
Est. \$1,500-\$2,500
Closing: Monday, February 26th, 5:56 P.M.



240. Large Balinese Garuda Figure
Indonesia. Early to mid 20th century. 19-1/8"H.
Collection of Mary K. F. Leong, WA.
Est. \$1,500-\$2,500
Closing: Monday, February 26th, 5:58 P.M.



241. Bark Cloth Tapa Painting with Sea Creatures

Wallis and Futuna, South Pacific.
63-1/2" x 30-1/2"
Ex. estate collection of Joseph G. Gerena, NYC.
Est. \$1,500-\$2,500
Closing: Tuesday, February 27th, 10:00 A.M.

242. Navajo-Two Grey Hills Blanket

New Mexico.
Ca. 1st half of 20th century. 50"W. x 80"L.
Private Florida collection,
ex. Sotheby's, NYC., 2002 or 2003.
Est. \$2,400-\$3,000
Closing: Tuesday, February 27th, 10:02 A.M.

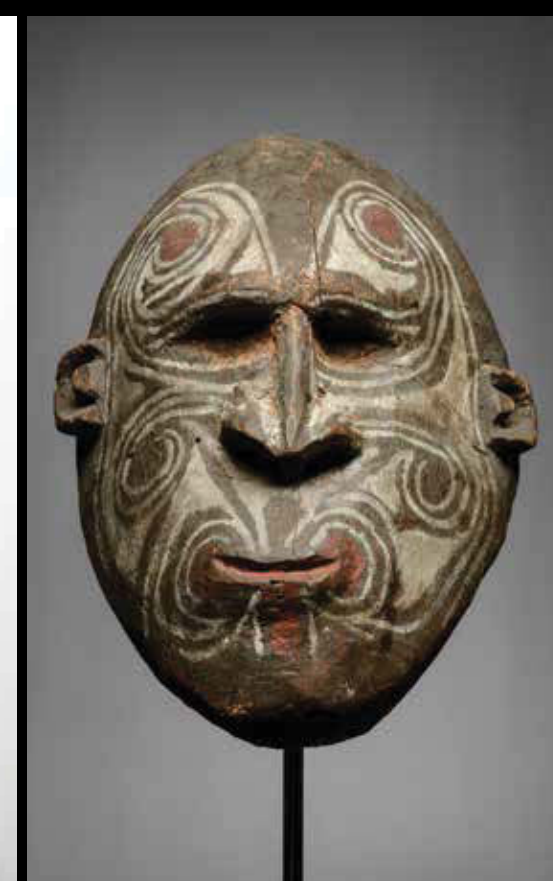
243. Navajo Blanket with Rolling Log

Western reservation, Southwestern, USA.
Ca. early 20th century. 96"L. x 64"W.
Collection of Mary K. F. Leong, WA., acquired
Adobe Gallery, Albuquerque, N.M., 1980's.
Est. \$3,000-\$5,000
Closing: Tuesday, February 27th, 10:04 A.M.



244. New Guinea Basket Hook Figure

New Guinea. 24"H.
Collection of Swanbild Castle,
Brooklyn, NY., acquired 1960's.
Est. \$600-\$900
Closing: Tuesday, February 27th, 10:06 A.M.



245. Sepik River Head

Papua New Guinea.
7-3/4"H.
Private US Collection.
Est. \$800-\$1,200
Closing: Tuesday, February 27th, 10:08 A.M.



246. Ifugao Spoon

Northern Luzon, Philippines. 17"L.
Ex. Marcel Gibrat collection, N.Y.C.,
collected 45 years ago.
Est. \$600-\$900
Closing: Tuesday, February 27th, 10:10 A.M.



247. Mississippian Horizon Caddo Vessel
North America. Ca. 1300-1600 A.D. 7-5/8"H. x 8-1/2"D.
Sold for the benefit of The Everson Museum of Art,
Syracuse, NY., gift of Jonathan Holstein.
Est. \$800-\$1,200 Closing: Tuesday, February 27th, 10:12 A.M.

248. Mississippian Horizon Caddo Olla
North American. Ca. 1300-1600 A.D. 4-1/2"H. x 9"L.
Sold for the benefit of The Everson Museum of Art,
Syracuse, NY., gift of Jonathan Holstein.
Est. \$500-\$800 Closing: Tuesday, February 27th, 10:14 A.M.



249. Eskimo Scrimmed Bone
Arctic. Early 20th century or earlier. 8-7/16"L.
Old Tucson collection.
Est. \$1,200-\$1,800 Closing: Tuesday, February 27th, 10:16 A.M.



250. Royal Spittoon Refuse Bowl
Hawaii. 2-3/4"H.
Ex. Ron Nasser. Ex. Bonhams, NYC., May 2017, # 137.
Est. \$8,000-\$12,000
Closing: Tuesday, February 27th, 10:18 A.M.



251. Rare Hawaiian Finger Washbasin
Hawaii. 3-1/8"H. Private NYC collection, acquired from Bonhams, New York, May 13, 2013, Lot 2031. Ex. Eric Tulman Collection, Hilo, Hawaii. Ex. John M. Warinner Hawaiian collection.
Est. \$8,000-\$12,000 Closing: Tuesday, February 27th, 10:20 A.M.



254. We Miniature Amulet Mask
Bete-Gere, Ivory Coast. 4-1/2"H. x 3"W.
Private US Collection. Ex. Italofile, David Ackley, Baltimore, MD.
Est. \$900-\$1,500
Closing: Tuesday, February 27th, 10:26 A.M.



255. Mende Miniature Helmet Masks Divination (2)
Sierra Leone. 3-1/2" & 3-3/4"H.
Collection of William Siegmann, Curator Emeritus, Brooklyn Museum.
Est. \$500-\$800
Closing: Tuesday, February 27th, 10:28 A.M.



252. Solomon Island Clubs (2)
Solomon Islands. 18-1/2"L. & 23-1/4"L.
Ex. Steffi Pinkus collection, NYC, acquired 60 years ago.
Est. \$400-\$600
Closing: Tuesday, February 27th, 10:22 A.M.



253. Large Washkuk Wooden Yam Mask
Warasei people, Upper Sepik River, New Guinea. 51-1/2"H.
Collection of Miriam and Eugene Halpert, Great Neck, NY.
Est. \$1,500-\$2,500
Closing: Tuesday, February 27th, 10:24 A.M.



256. Unusual Stone & Terracotta Maskettes (2)
Liberia. 2-3/4"H. & 4"H.
Collection of William Siegmann, Curator Emeritus, Brooklyn Museum.
Est. \$750-\$1,000
Closing: Tuesday, February 27th, 10:30 A.M.



257. Bassa Passport Masks (2)
Liberia. 3-5/8"L. & 4-1/8"L.
Collection of William Siegmann, Curator Emeritus, Brooklyn Museum.
Est. \$750-\$1,000
Closing: Tuesday, February 27th, 10:32 A.M.



258. Leather Covered Dan Amulet Mask
Ivory Coast. 3-1/2"H.
Private US Collection. Acquired from Tribal Arts Gallery, New York.
Est. \$700-\$1,000
Closing: Tuesday, February 27th, 10:34 A.M.



259. Four Dan Passport Masks and One Divination Figure (5)
Liberia/ Ivory Coast. 1-3/4" to 3"H.
Collection of William Siegmann, Curator Emeritus, Brooklyn Museum.
Est. \$900-\$1,200
Closing: Tuesday, February 27th, 10:36 A.M.



260. Toma Horned Mask with Bared Teeth
Guinea. 22"H.
Collection of William Siegmann,
Curator Emeritus, Brooklyn Museum.
Est. \$2,500-\$3,500
Closing: Tuesday, February 27th, 10:39 A.M.



261. Baule Wooden Ointment Pot
Ivory Coast. 9-1/4"H.
Private US Collection.
Ex. Tribal Arts Gallery, New York, 1970's.
Est. \$1,500-\$2,500
Closing: Tuesday, February 27th, 10:40 A.M.



262. Attie Wood Pounder
Ivory Coast. 16"H.
Private US Collection. Ex. Lucien
Gueneguez, WA.
Est. \$1,500-\$2,000
Closing: Tuesday, February 27th, 10:42 A.M.



266. Fanti Figure with Black Slip
Ivory Coast. 13-1/4"H.
Ex. Marcel Gibrat collection, NYC.,
collected 45 years ago.
Est. \$600-\$900
Closing: Tuesday, February 27th, 10:50 A.M.



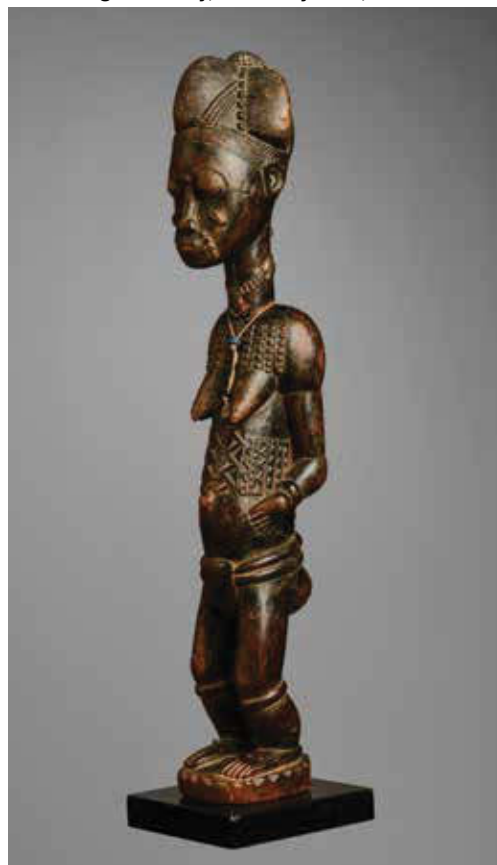
267. Baule Figure
Ivory Coast. 13"H.
Private NYC collection.
Est. \$2,000-\$3,000
Closing: Tuesday,
February 27th, 10:52 A.M.



268. Bassa Mask
Liberia. 7"H.
The Estate of Irwin and Ceci Smiley.
Est. \$1,200-\$1,800
Closing: Tuesday,
February 27th, 10:54 A.M.



263. Dan Mask
Liberia. 9-3/4"H.
Ex. Marcel Gibrat collection, NYC.,
collected 45 years ago.
Est. \$600-\$900
Closing: Tuesday, February 27th, 10:44 A.M.



264. Baule Standing Female
Ivory Coast. 17-1/4"H.
Private US Collection.
Est. \$2,000-\$2,500
Closing: Tuesday, February 27th, 10:46 A.M.



265. Baule Mask with Horns
Ivory Coast. 11-1/4"H.
Private US Collection. Acquired from
Tribal Arts Gallery, NY.
Est. \$2,000-\$3,000
Closing: Tuesday, February 27th, 10:48 A.M.



269. Wood Mortar
Liberia. Ca. 20th century. 20-1/8"H. x 14-3/8"W.
Collection of William Siegmann,
Curator Emeritus, Brooklyn Museum.
Est. \$400-\$600
Closing: Tuesday, February 27th, 10:56 A.M.



270. Bassa Ceremonial Mask
Liberia. 8-1/2"H.
Collection of William Siegmann,
Curator Emeritus, Brooklyn Museum.
Est. \$900-\$1,350
Closing: Tuesday, February 27th, 10:58 A.M.



271. Toma Mask
Liberia. 13-3/4"H.
Private NYC collection.
Est. \$800-\$1,200
Closing: Tuesday,
February 27th, 11:00 A.M.



272. Nomoli Figure
Sierra Leone. Ca. 14th-15th Cent. 5"H.
Collection of William Siegmann,
Curator Emeritus, Brooklyn Museum.
Est. \$800-\$1,200
Closing: Tuesday, February 27th, 11:02 A.M.



273. Kissi Stone "Pomdo" Figure
Guinea or Liberia. Ca. 14th-15th century. 7-1/4"H.
Collection of William Siegmann,
Curator Emeritus, Brooklyn Museum.
Est. \$800-\$1,200
Closing: Tuesday, February 27th, 11:04 A.M.



274. Kissi Stone "Pomdo" Figure
Sierra Leone. 5"H.
Collection of William Siegmann,
Curator Emeritus, Brooklyn Museum.
Est. \$500-\$800
Closing: Tuesday, February 27th, 11:06 A.M.



278. Dan Wooden Chest
Liberia. Ca. 20th century. 12"H. x 29"W.
Collection of William Siegmann, Curator Emeritus, Brooklyn Museum.
Est. \$800-\$1,200
Closing: Tuesday, February 27th, 11:14 A.M.



279. Sowe/Golla Helmet
Sierra Leone. 20"H.
Private US Collection.
Est. \$2,500-\$3,500
Closing: Tuesday, February 27th, 11:16 A.M.



275. Stone Loma Figure & Animal (2)
Liberia. 4-7/8"H. & 5"H.
Collection of William Siegmann, Curator Emeritus, Brooklyn Museum.
Est. \$600-\$900
Closing: Tuesday, February 27th, 11:08 A.M.



276. Dan Wooden Chair
Liberia. Ca. 20th century. 34-1/4"H. x 26-1/2"W.
Collection of William Siegmann, Curator Emeritus, Brooklyn Museum.
Est. \$600-\$900
Closing: Tuesday, February 27th, 11:10 A.M.



277. Dan Wooden Chair with Incised Designs
Liberia. Ca. 20th century. 33-7/8"H. x 26-1/2"W.
Collection of William Siegmann, Curator Emeritus, Brooklyn Museum.
Est. \$600-\$900
Closing: Tuesday, February 27th, 11:12 A.M.



280. Benin Figural Grouping with Reckitts Blue Additions
Fon people, Dahomey kingdom. 10"H.
Private NYC collection.
Est. \$600-\$900
Closing: Tuesday, February 27th, 11:18 A.M.



281. Tall Mende Helmet Mask
Sierra Leone. 17-1/4"H.
Collection of William Siegmann,
Curator Emeritus, Brooklyn Museum.
Est. \$800-\$1,200
Closing: Tuesday, February 27th, 11:20 A.M.



282. Mende Helmet Mask
Sierra Leone. 13-1/2"H.
Collection of William Siegmann,
Curator Emeritus, Brooklyn Museum.
Est. \$1,000-\$1,500
Closing: Tuesday, February 27th, 11:22 A.M.



283. Large Gongoli Mask
Sierra Leone. 23"H.

Collection of William Siegmann, Curator Emeritus, Brooklyn Museum. Published: Bortolot et al., "Visions of the Forests: The Art of Liberia and Sierra Leone", U. of Washington Press, 2014, no. 24
Est. \$800-\$1,200

Closing: Tuesday, February 27th, 11:24 A.M.



284. Kissi Divination Figure with Wrapped Cloth & Shells
Guinea. Mid 20th century. 19-1/4"H.

Collection of William Siegmann, Curator Emeritus, Brooklyn Museum. Published: "Visions from the Forests: The Art of Liberia and Sierra Leone" Fig. 7.9, p. 113-115.
Est. \$1,200-\$1,800

Closing: Tuesday, February 27th, 11:26 A.M.



285. Bamana Female Figure
Mali. 16-1/2"H.

Ex. Leonard Kahan.
Est. \$1,200-\$1,800

Closing: Tuesday, February 27th, 11:28 A.M.



288. Clay Amulet Head
Mali. 4-1/2"H.

Collection of William Siegmann, Curator Emeritus, Brooklyn Museum.
Est. \$400-\$600

Closing: Tuesday, February 27th, 11:34 A.M.



289. Lobi Standing Female Figure
Burkina Faso. 7"H.

Private US Collection. Acquired from Alan Brandt, NY.
Est. \$2,000-\$3,000

Closing: Tuesday, February 27th, 11:36 A.M.



290. Bamana Multi-Horn Antelope Chiwara
Sikasso region, Mali. 18-1/8"H.

Ex. Marcel Gibrat collection, NYC., collected 45 years ago.
Est. \$800-\$1,200

Closing: Tuesday, February 27th, 11:38 A.M.



286. Dogon Granary Door
Mali. 28-1/4"H. x 18-3/4"W.

Bought in Bamako, Mali 1961.
Est. \$1,000-\$1,500

Closing: Tuesday, February 27th, 11:30 A.M.



287. Dogon Two Panel Wood Shutter
Mali. Ca. 20th century. 23"H. x 18-1/4"W.

Collection of William Siegmann, Curator Emeritus, Brooklyn Museum.
Est. \$600-\$900

Closing: Tuesday, February 27th, 11:32 A.M.



291. Mossi Plank Mask
Burkina Faso. 83"H.

Estate of Hannelore Schulhof, collection of Rudolph B. and Hannelore B. Schulhof, Kings Point, NY, 1950's-1970's.
Est. \$2,500-\$3,500
Closing: Tuesday, February 27th, 11:40 A.M.

292. Bamana Puppet
Segou region, Mali. 24-3/4"H.

Private US Collection. Ex. Shango Galleries, TX. Ex. Ida Kohlmeyer, LA.
Est. \$2,000-\$3,000

Closing: Tuesday, February 27th, 11:42 A.M.



293. Tikar Carved Drinking Horn

Cameroon. 8"H.
Private US Collection.
Ex. Michael Oliver, NY.
Est. \$1,500-\$2,500

Closing: Tuesday, February 27th, 11:44 A.M.



294. Namji Figure

Cameroon. 14-1/2"H.
Private US Collection. Acquired
from Tribal Arts Gallery, New York.
Est. \$2,000-\$3,000

Closing: Tuesday, February 27th, 11:46 A.M.



295. Kota Bird Head Knife "Musele"

Gabon. 14-1/2"L.
Albert A. List Family collection, acquired from
Galerie Kamer, NYC., 1964. (Henri Kamer).
Est. \$750-\$1,000

Closing: Tuesday, February 27th, 11:48 A.M.



298. Fanti Figure

Ghana. 6-7/8"H.
Private US Collection.
Est. \$400-\$600

Closing: Tuesday, February 27th, 11:54 A.M.



299. Fanti Figure with Bowl

Ghana. 11-1/4"H.
Private US Collection.
Est. \$1,000-\$1,500

Closing: Tuesday, February 27th, 11:56 A.M.



296. Bekom Mask

Western Grassfields, Cameroon. 14-1/2"H.
Private US Collection. Ex. Leonard Kahan
Gallery, NY., 1980's.
Est. \$1,000-\$1,500

Closing: Tuesday, February 27th, 11:50 A.M.



297. Bekom Mask

Western Grassfields, Cameroon.
16"H.
Private New Jersey collection.
Est. \$900-\$1,200

Closing: Tuesday, February 27th, 11:52 A.M.



300. Ibeji Female Figures (2)

Nigeria. 10-1/4"H. x 10-3/8"H.
Collection of William Siegmann,
Curator Emeritus, Brooklyn Museum.
Est. \$750-\$1,000

Closing: Tuesday, February 27th, 11:58 A.M.

301. Ibeji Figures with Beaded Jewelry (3)

Nigeria. 10-1/8" to 11-3/8"H.
Collection of William Siegmann,
Curator Emeritus, Brooklyn Museum.
Est. \$1,000-\$1,500

Closing: Tuesday, February 27th, 12:00 Noon

302. Ibeji Couple with Cowry Shell Bracelets

Nigeria. 11-3/4"H.
Collection of William Siegmann,
Curator Emeritus, Brooklyn Museum.
Est. \$800-\$1,200

Closing: Tuesday, February 27th, 12:02 P.M.



303. "Idiok Ekpo" Mask
Ibibio people, Nigeria. 11"H.
Ex. Chickie Rosenberg collection, NJ.,
acquired from American Primitive, 1998.
Est. \$600-\$900
Closing: Tuesday, February 27th, 12:04 P.M.



304. Igbo Helmet Mask
Nigeria. 12"H.
Private US Collection. Acquired
from Art Premier, Brussels.
Est. \$1,200-\$1,800
Closing: Tuesday, February 27th, 12:06 P.M.



305. Igala Wooden Mask
Nigeria.
12-3/4"H. x 7"W.
Private US Collection.
Est. \$1,500-\$2,000
Closing: Tuesday, February 27th, 12:08 P.M.



308. Dakakari Standing Female Figure
Nigeria. 17-1/4"H.
Private US Collection. Acquired from Sulaiman
Diane, NY. Authenticated by Roy Sieber.
Est. \$3,000-\$5,000
Closing: Tuesday, February 27th, 12:14 P.M.



309. Ogoni Mask with Horns & Bird
Nigeria. 17"H.
Private US Collection. Ex. Oumar Keinde.
Est. \$2,000-\$3,000
Closing: Tuesday, February 27th, 12:16 P.M.



310. Igbo Animal Mask
Nigeria. 14-1/2"H.
Private US Collection. Acquired from
Arcade Gallery of London, UK.
Est. \$2,000-\$3,000
Closing: Tuesday, February 27th, 12:18 P.M.



306. Igbo Mask
Nigeria. 20"H.
Collection of William Siegmann, Curator Emeritus, Brooklyn Museum.
Est. \$700-\$900
Closing: Tuesday, February 27th, 12:10 P.M.



307. Ibo "Agbara" Figure
Nigeria. 34"H.
Acquired from William Wright, 1999.
Est. \$900-\$1,300
Closing: Tuesday, February 27th, 12:12 P.M.



311. Pair of Idoma Crest Heads
Nigeria. 10-1/2"H. & 12-1/2"H.
Private US Collection. Acquired from Leonard Kahan Gallery, NY.
Est. \$1,500-\$2,500
Closing: Tuesday, February 27th, 12:20 P.M.



312. Izzi Elephant Mask
Nigeria. 14"H.
Private US Collection. Acquired from Tribal Arts Gallery, NY.
Est. \$2,500-\$3,500
Closing: Tuesday, February 27th, 12:22 P.M.

313. Terracotta Bovine
Nigeria. 4-3/4"H. 7-1/2"L.
Ex. collection of Maurice Shapiro, NYC.,
acquired 1960's - 1970's, inherited by his sister.
Est. \$750-\$1,000
Closing: Tuesday, February 27th, 12:24 P.M.



314. Gelede Mask with Snakes and Pig
Yoruba, Nigeria. 14-1/2"H.

Private US Collection; Ex. Oumar Kiende.
Published: "Gelede: Art and Female Power Among the Yoruba"
by Henry John Drewal & Margaret Thompson Drewal,
Bloomington, Indiana University Press, 1983, plate 1, p.9.
Est. \$2,500-\$3,000

Closing: Tuesday, February 27th, 12:26 P.M.

315. Medicine Iron Osanyin Staff
Nigeria. 17-1/2"H.

Ex. Chickie Rosenberg
collection, N.J., acquired from
Washington Irving Gallery, 1998.
Est. \$400-\$600

Closing: Tuesday,
February 27th, 12:28 P.M.



318. Kuba Pwoom Itok Mask

Democratic Republic Congo. 9"H.
Ex. collection of Maurice Shapiro, NYC.,
acquired 1960's - 1970's, inherited by his sister.
Est. \$1,200-\$1,800

Closing: Tuesday, February 27th, 12:34 P.M.



319. Lega Mask

Democratic Republic Congo.
20-1/2"H. with beard.
Private NYC collection, ex. Sam Hilu collection.
Est. \$1,500-\$2,500

Closing: Tuesday, February 27th, 12:36 P.M.



320. Bembe Male "Biteki" Figure

Democratic Republic of Congo.
6"H.

Ex. Brant Mackley.
Est. \$4,000-\$6,000

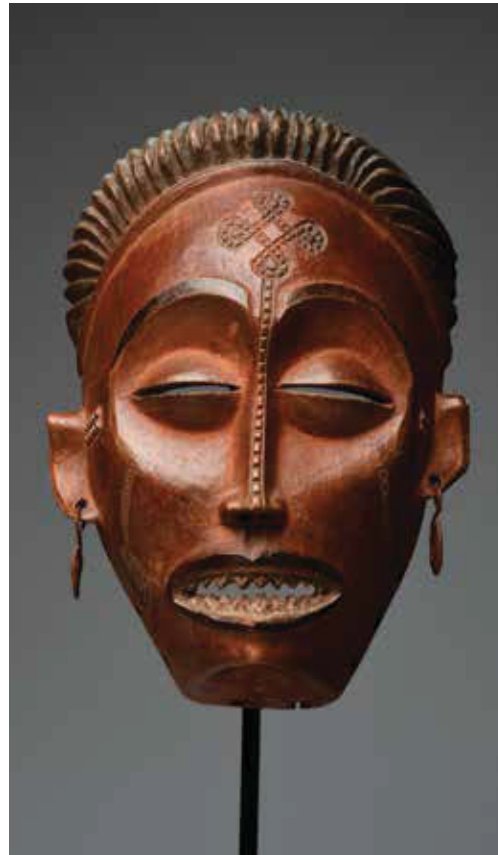
Closing: Tuesday, February 27th, 12:38 P.M.



316. Gelede Mask with Three Figures
Yoruba, Nigeria. 14-3/4"H.

Private US Collection; Ex. Oumar Kiende. Published: "Gelede: Art and Female Power Among the Yoruba"
by Henry John Drewal & Margaret Thompson Drewal, Bloomington, Indiana University Press, 1983, plate 11, p. 34.
Est. \$2,500-\$3,000

Closing: Tuesday, February 27th, 12:30 P.M.



317. Chokwe Mwana Pwo Mask
Angola.

7-3/4"H. (20cm)
Ex. Private collection, Brussels.
Est. \$1,000-\$1,500

Closing: Tuesday, February 27th, 12:32 P.M.



321. Lega Mask

Democratic Republic Congo.
12-1/2"H.

Private European collection.
Est. \$600-\$900

Closing: Tuesday, February 27th, 12:40 P.M.



322. Mbole Abstract Figure

Democratic Republic Congo. 13-5/16"H.

Ex. Marcel Gibrat collection, NYC.,
collected 45 years ago.
Est. \$800-\$1,200

Closing: Tuesday, February 27th, 12:42 P.M.



323. Pende Mask

Democratic Republic of Congo.
7-1/2"H.

Private US Collection.
Est. \$3,000-\$5,000

Closing: Tuesday, February 27th, 12:44 P.M.

324. Three-Faced Pende Mask
Democratic Republic of Congo.
Ca. Mid 20th century. 14"H.
Ex. J. Visser, Brussels.
Belgian private collection.
Est. \$3,000-\$5,000
Closing: Tuesday,
February 27th,
12:46 P.M.



328. Ngulu Ceremonial Sword
Ngombe people, Democratic
Republic of Congo. 23-1/2"L.
Albert A. List Family collection,
acquired from Galerie Kamer,
NYC., 1964. (Henri Kamer).
Est. \$800-\$1,200
Closing: Tuesday,
February 27th, 12:54 P.M.



326. Hemba Ancestral Figure
Democratic Republic of Congo. 10-3/4"H.
Ex. Leonard Kahan.
Est. \$800-\$1,200
Closing: Tuesday, February 27th, 12:50 P.M.



327. Congo Mask with Horn
Democratic Republic of Congo.
9-1/2"H.
Ex. Marcel Gibrat collection, NYC.,
collected 45 years ago.
Est. \$900-\$1,300
Closing: Tuesday, February 27th, 12:52 P.M.



329. Zulu Cane
South Africa. 34"H.
Nasser collection, ex. Merton
Simpson. Ex. Robert Miller.
Est. \$2,000-\$3,000
Closing: Tuesday,
February 27th, 12:56 P.M.

**330. Pende "Mbuya"
Mask with Long Beard**
Democratic Republic of Congo. 17"H.
Private New Jersey collection
ex. Leonard Kahan.
Est. \$1,000-\$1,500
Closing: Tuesday,
February 27th, 12:58 P.M.



325. Suku Power Figure
Democratic Republic of Congo. 4"H.
Private NYC collection. Ex. Roger Lefevre,
Primitive Art, Brussels. Accompanied by
original bill of sale, 2007.
Est. \$800-\$1,200
Closing: Tuesday, February 27th, 12:48 P.M.



331. Danish Neolithic Adze Blades (3)
Northern Europe. Ca. 6000-3500 B.C. 5-1/2"L., 7"L. & 7-1/4"L.
Private NYC collection, acquired 1970's-1980's.
Est. \$1,000-\$1,500
Closing: Tuesday, February 27th, 1:00 P.M.



332. Danish Neolithic Stone Tools (3)
Northern Europe. Ca. 6000-3500 B.C. 3-1/4", 3-1/4" & 3-1/2"L.
Private NYC collection, acquired 1970's-1980's.
Est. \$300-\$500
Closing: Tuesday, February 27th, 1:02 P.M.



333. Danish Neolithic Chisel & Knives (3)
Northern Europe. Ca. 6000-3500 B.C. 5"L., 5-1/4"L. & 7-1/4"L.
Private NYC collection, acquired 1970's-1980's.
Est. \$500-\$800
Closing: Tuesday, February 27th, 1:04 P.M.



337. Neolithic Fertility Goddess Fragment
Early Greece. Ca. 3rd millennium B.C. 2-1/8"H.
Private NYC collection, acquired from
Ariadne Gallery, NYC., early 1980's.
Est. \$600-\$900
Closing: Tuesday, February 27th, 1:12 P.M.

338. Neolithic Fertility Figure Fragments (3)
Early Greece. Ca. 3rd millennium B.C.
1-1/2" to 3"H. NYC collection, acquired from
Ariadne Gallery, NYC., early 1980's.
Est. \$1,000-\$1,500
Closing: Tuesday, February 27th, 1:14 P.M.

339. Thessalian Venus Figure
Greece. Ca. 6th millennium B.C. 2-3/4"H.
Private NYC collection, acquired from Ariadne
Gallery, NYC., early 1980's.
Est. \$1,500-\$2,500
Closing: Tuesday, February 27th, 1:16 P.M.



334. Danish Neolithic Boat Stone Axe Blades (2)
Northern Europe. Ca. 6000-3500 B.C. 4-3/4"L. x 5-1/2"L.
Private NYC collection, acquired 1970's-1980's.
Est. \$1,000-\$1,500
Closing: Tuesday, February 27th, 1:06 P.M.



335. Neolithic Zoomorphic Figures & Idols (5)
Early Greece. Ca. 3rd millennium B.C. 1" to 2-3/4"H.
Private NYC collection, acquired from Ariadne Gallery, NYC., early 1980's.
Est. \$1,200-\$1,800
Closing: Tuesday, February 27th, 1:08 P.M.

336. Vinca Head & Bust (2)
Southeastern Europe. Ca. 5700-4500 B.C. 1-1/2"H. & 3"H.
Private NYC collection, acquired from Ariadne Gallery, NYC., early 1980's.
Est. \$800-\$1,200
Closing: Tuesday, February 27th, 1:10 P.M.



340. Kilia Marble Fragments (3)
Anatolia. Ca. 2800-2200 B.C. 1-1/2" to 3-1/4"H.
Private NYC collection, acquired from Ariadne Gallery, NYC., early 1980's.
Est. \$700-\$1,000
Closing: Tuesday, February 27th, 1:18 P.M.

341. Kilia Marble Heads (3)
Anatolia. Ca. 2800-2200 B.C. 1-1/2" to 1-3/4"H.
Private NYC collection, acquired from Ariadne Gallery, NYC., early 1980's.
Est. \$1,000-\$1,500
Closing: Tuesday, February 27th, 1:20 P.M.



342. Neolithic Figure & Two Heads (3)
Anatolia. Ca. 4th millennium B.C. 7/8" to 4-1/2"H.
Private NYC collection, acquired from Ariadne Gallery, NYC., early 1980's.
Est. \$1,200-\$1,500
Closing: Tuesday, February 27th, 1:22 P.M.



343. Kilia "Star Gazer" Marble Female Idol
Anatolia. Ca. 2800-2200 B.C. 2-3/8"H.
Private NYC collection, ex. private collection of
Harlan J. Berk, Chicago.
Est. \$10,000-\$15,000
Closing: Tuesday, February 27th, 1:24 P.M.

344. Kilia "Star Gazer" Marble Female Idol
Anatolia. Ca. 2800-2200 B.C. 1-1/4"H.
Private NYC collection, ex. private collection of
Harlan J. Berk, Chicago.
Est. \$8,000-\$12,000
Closing: Tuesday, February 27th, 1:26 P.M.

345. Kilia Marble Head & Torso
Anatolia. Ca. 2800-2200 B.C. 4-7/8"H.
Private NYC collection, acquired from Ariadne
Gallery, NYC., early 1980's.
Est. \$6,000-\$9,000
Closing: Tuesday, February 27th, 1:28 P.M.



346. Kilia Head
Anatolia. Ca. 2800-2200 B.C.
2-1/4"H. x 2-1/2"W.
Private NYC collection, acquired from
Ariadne Gallery, NYC., early 1980's.
Est. \$1,000-\$1,500
Closing: Tuesday, February 27th, 1:30 P.M.



347. Kilia Head with Carved Nose
Anatolia. Ca. 2800-2200 B.C.
1-3/4"H. x 1-7/8"W.
Private NYC collection, acquired from
Ariadne Gallery, NYC., early 1980's.
Est. \$1,000-\$1,500
Closing: Tuesday, February 27th, 1:32 P.M.



348. Vinca Large Head
Southeastern Europe.
Ca. 5700-4500 B.C. 4-1/2"H.
Private NYC collection, acquired from
Ariadne Gallery, NYC., early 1980's.
Est. \$1,200-\$1,800
Closing: Tuesday, February 27th, 1:34 P.M.



349. Kilia Marble Head
Anatolia. Ca. 2800 - 2200 B.C. 1-1/2"H. x 2"W.
Private NYC collection, ex. private collection of Harlan J. Berk, Chicago.
Est. \$700-\$1,000
Closing: Tuesday, February 27th, 1:36 P.M.



350. Miniature Thessalian & Tel Brak Headless Figures (2)
Greece. Ca. 6th millennium B.C. 1-1/2"H. & 2-1/4"H.
Private NYC collection, acquired from Ariadne Gallery, NYC., early 1980's.
Est. \$1,000-\$1,500
Closing: Tuesday, February 27th, 1:38 P.M.

351. Neolithic Figures & Fragments (6)
Early Greece. Ca. 5000-3000 B.C. 1" to 2-1/4"H.
Private NYC collection, acquired from Ariadne Gallery, NYC., early 1980's.
Est. \$1,000-\$1,500
Closing: Tuesday, February 27th, 1:40 P.M.



352. Vinca Pottery Votive Objects (4)
Southeastern Europe.
Ca. 5700-4500 B.C. 1-3/4" to 4-1/2"H.
Private NYC collection, acquired from Ariadne Gallery, NYC., early 1980's.
Est. \$1,000-\$1,500
Closing: Tuesday, February 27th, 1:42 P.M.



353. Cuneiform Votive Cone, Account Tablet and Clay Tablet (3)
Ancient Near East. Ca. 2200-1500 B.C. 1" to 3-1/2"L.
Private Hawaiian collection, ex. Kaye Fredericks collection, acquired from Pegasi Numismatics, MI., 494, catalog no. 127 (cone); catalog no. 520 (acct. tablet). Ex. Pegasi Numismatics, PA., 560, catalog no. S21 (clay tablet).
Est. \$600-\$900
Closing: Tuesday, February 27th, 1:44 P.M.



354. Cuneiform Tablet
Mesopotamia.
Ca. 3rd-2nd millennium B.C. 1-3/8"L.
Collection of Mary K. F. Leong, WA., 1980-1990.
Est. \$400-\$600
Closing: Tuesday, February 27th, 1:46 P.M.



355. Cuneiform Ration Tablet
Ancient Near East. Old Babylonian, XX-XVI century B.C. 2-3/8" x 1-5/8"
Private Hawaiian collection, ex. Kaye Fredericks collection, acquired from Pegasi Numismatics, MI., 491, catalog no. 124.
Est. \$500-\$800
Closing: Tuesday, February 27th, 1:48 P.M.



356. Old Babylonian Cuneiform Tablet
Ancient Near East.
Old Babylonian, XVII-XVI century B.C. 1-5/8" x 1-1/4"
Private Hawaiian collection, ex. Kaye Fredericks collection, acquired from Pegasi Numismatics, MI., 491, catalog no. 126.
Est. \$500-\$700
Closing: Tuesday, February 27th, 1:50 P.M.



357. Cuneiform Tablets (2)
Ancient Near East. Old Babylonian, 2100-1500 B.C.
1-5/8" x 1-1/2" 1-3/4" x 1-1/2"
Private Hawaiian collection, ex. Kaye Fredericks collection, acquired from Pegasi Numismatics, MI., catalog #'s. 583, 531.
Est. \$700-\$900
Closing: Tuesday, February 27th, 1:52 P.M.



358. Luristan Bronze Astarte Figure
Iran. Ca. 1200-900 B.C. 4-1/4"H.
Private CT. collection, acquired from Henry Anavian, NYC., 1970's.
Est. \$8,000-\$10,000
Closing: Tuesday, February 27th, 1:54 P.M.



359. Bactrian Chlorite Game Board
Trans-intercultural. Ca. late 3rd millennium B.C. 7-1/8"L.
Ex. Serena Collection, London.
Est. \$3,500-\$4,500
Closing: Tuesday, February 27th, 1:56 P.M.



360. Achaemenid Silver Strap Union
Iran. Ca. 5th century B.C. 2-7/8"W.
NYC collection, acquired from Yacob's Gallery, London. Metallurgic report from Dr. Peter Northover, University of Oxford, # R1292.
Est. \$6,000-\$9,000
Closing: Tuesday, February 27th, 1:58 P.M.



361. Luristan Horse Bit
NW Iran. Ca. 1st millennium B.C. 8-3/4"W., 3-3/8"H.
Ex. Estate collection of Nouroollah Elghanayan, NYC., acquired 1960's - 1970's.
Est. \$4,000-\$5,000
Closing: Tuesday, February 27th, 2:00 P.M.



362. Syro-Hittite Stone Guardian Lion
Middle East. Ca. 300 B.C. 9-1/2"H.
Collection of Elaine Lustig Cohen, acquired from Mathias Komor, NYC., 1971, with original sales receipt.
Est. \$3,000-\$5,000
Closing: Tuesday, February 27th, 2:02 P.M.



363. Sumerian Shell Depicting the Bird God Imdugud
Mesopotamia.
Ca. 2nd to 1st millennium B.C. 6-1/4"W.
Ex. Ian Beckmans, Holland and Germany, before 1980.
Est. \$4,500-\$5,500
Closing: Tuesday, February 27th, 2:04 P.M.



364. Mesopotamian Stone Bulls Heads (2)
Ancient Near East. Ca. 3rd - 2nd millennium B.C. 7/8"L. & 1-1/16"L.
NYC collection, acquired from Henry Anavian,
Sumer Gallery, NYC., 1981 and 1982.
Est. \$500-\$750
Closing: Tuesday, February 27th, 2:06 P.M.



369. Sumerian Lapis Lion (Jemdet-Nasr)
Sumer, Mesopotamia. Ca. 1st millennium B.C. 2"L.
Private CT. collection, acquired from Gawain McKinley, prior to 1980. Serena
Collection, London, acquired before 1975.
Est. \$1,500-\$2,500
Closing: Tuesday, February 27th, 2:16 P.M.



370. Luristan Double Bird Bronze Pendant
Iran. Ca. 1st millennium B.C. 1"H. x 2-9/16"W.
Private NYC collection, acquired 1980's from
Sumer Gallery, Henry Anavian, NYC.
Est. \$600-\$900
Closing: Tuesday, February 27th, 2:18 P.M.

371. Decorated Bronze Bowl
Ancient Near East. Ca. 1st millennium B.C. 5"D.
Estate collection of Nourollah Elghanayan, NYC., acquired 1960's - 1970's.
Est. \$1,000-\$1,500
Closing: Tuesday, February 27th, 2:20 P.M.



365. Sumerian-Uruk Bull Head Amulet
Ancient Near East.
Ca. 3rd century B.C. 1-1/2"W.
Ex. Serena Collection, London.
Est. \$1,800-\$2,500
Closing: Tuesday, February 27th, 2:08 P.M.



366. Mesopotamian Shell, Stone & Paste Glass Amulets (4)
Mesopotamian. Ca. 2nd-1st millennium B.C. 1/2" to 7/8"L.
Private NYC collection, acquired from Henry Anavian,
Sumer Gallery, NYC., 1981 and 1982.
Est. \$400-\$600
Closing: Tuesday, February 27th, 2:10 P.M.



367. Jemdet-Nasr Vulture Amulet
Mesopotamia. Ca. 3rd millennium B.C. 1-3/8"W.
Ex. Serena Collection, London.
Est. \$1,800-\$2,500
Closing: Tuesday, February 27th, 2:12 P.M.



368. Assyrian Bronze Figural Amulet & Cylinder Seal (2)
Ancient Near East. Ca. 2nd - 1st millennium B.C. 1-1/16"L. & 1-1/2"L.
Private NYC collection, acquired from Louis DiLauro, early 1980's.
Est. \$600-\$900
Closing: Tuesday, February 27th, 2:14 P.M.



372. Bronze Janeiform Amulet of Pazuzu or Humbaba
Ancient Near East. Ca 1st millennium B.C.
1"H. NYC collection, ex. Sumer Gallery,
Henry Anavian, 1970's.
Est. \$500-\$750
Closing: Tuesday, February 27th, 2:22 P.M.



373. Amlash Bronze Figural Couple Amulet
Ancient Persia.
Ca. 1st millennium B.C. 2-3/8"L.
Private NYC collection, acquired at
Gorny & Mosch, Germany, 2012.
Est. \$800-\$1,200
Closing: Tuesday, February 27th, 2:24 P.M.



374. Amlash Bronze Figural Couple Amulet with Intertwined Arms
Ancient Persia. Ca. 1st millennium B.C. 2"L.
Private NYC collection, acquired at
Gorny & Mosch, Germany, 2012.
Est. \$800-\$1,200
Closing: Tuesday, February 27th, 2:26 P.M.



375. Parthian Large Clay Bullae with Mounted Riders (2)
Sassanian Empire. Ca. 5th century A.D. 3"W. & 3-1/8"H.
Private NYC collection, acquired 1980's from Achmed Saeedi, London.
Est. \$1,000-\$1,500
Closing: Tuesday, February 27th, 2:28 P.M.



376. Sassanian Pottery Bullae (3)
Central Asia. Ca. 5th century A.D. 1-3/4" to 2-5/8"W.
Private NYC collection, acquired 1980's from Achmed Saeedi, London.
Est. \$1,000-\$1,500
Closing: Tuesday, February 27th, 2:30 P.M.



377. Large Pottery Bulla with Multiple Seal Impressions
Parthian, Sassanian Empire. Ca. 5th century A.D. 3"W.
Private NYC collection, acquired from Derek J. Content, UK., 1980's.
Est. \$800-\$1,200
Closing: Tuesday, February 27th, 2:32 P.M.



378. Sassanian Pottery Bullae with Seal Impressions (2)
Parthian, Sassanian Empire. Ca. 5th century A.D. 2-1/8"W. & 2-3/8"H.
Private NYC collection, acquired from Derek J. Content, UK., 1980's.
Est. \$750-\$1,000
Closing: Tuesday, February 27th, 2:34 P.M.



379. Sassanian Pottery Bullae with Multiple Impressions (3)
Parthian, Sassanian Empire. Ca. 5th century A.D. 2-5/16" to 1-3/4"W.
Private NYC collection, ex. Samuel Eilenberg collection.
Est. \$600-\$900
Closing: Tuesday, February 27th, 2:36 P.M.



380. Parthian Pottery Bullae (5)
Parthian, Sassanian Empire. Ca. 5th century A.D. 1-1/4" to 1-5/8"W.
Private NYC collection, ex. Samuel Eilenberg collection.
Est. \$750-\$1,000
Closing: Tuesday, February 27th, 2:38 P.M.



381. Syro-Hittite Astarte Figures (2)
Middle East. Ca. 2nd - 1st millennium B.C. 4-3/4"H. & 6-1/2"W.
Collection of Swanhild Castle, Brooklyn, NY., acquired 1960's.
Est. \$1,000-\$1,500
Closing: Tuesday, February 27th, 2:40 P.M.

382. Parthian Pottery Bullae (4)
Parthian, Sassanian Empire. Ca. 5th century A.D. 1" to 1-1/4"W.
Private NYC collection, ex. Samuel Eilenberg collection.
Est. \$500-\$800
Closing: Tuesday, February 27th, 2:42 P.M.



383. Parthian Small Clay Bullae (5)
Parthian, Sassanian Empire. Ca. 5th century A.D. 15/16" to 1-1/4"W.
Private NYC collection, ex. Samuel Eilenberg collection.
Est. \$500-\$800
Closing: Tuesday, February 27th, 2:44 P.M.



384. Bactrian Stone Head
Afghanistan. Ca. 1st millennium B.C. 2-3/8"H.
Private NYC collection, acquired 1990.
Est. \$800-\$1,200
Closing: Tuesday, February 27th, 2:46 P.M.



385. Sialuk Beaked Vessel
NW Iran. Ca. 1st millennium B.C. 4"H. x 8"L.
Collection of Swanhild Castle, Brooklyn, NY., acquired 1960's.
Est. \$500-\$800
Closing: Tuesday, February 27th, 2:48 P.M.



386. Large Parthian Chalcedony Seal
 Eastern Empire. Sassanian Empire, ca. 5th century A.D. 1-1/4"W.
 Private NYC collection, acquired 1980's, ex. Samuel Eilenberg collection.
 Est. \$1,500-\$2,500
 Closing: Tuesday, February 27th, 2:50 P.M.



387. Sassanian Chalcedony Stamp Seal with Figures in Combat
 Sassanian Empire. Ca. 5th century A.D. 1-1/4"W.
 Private NYC collection, ex. Samuel Eilenberg collection.
 Est. \$1,000-\$1,500
 Closing: Tuesday, February 27th, 2:52 P.M.



392. Carnelian Figural Intaglios (2)
 Eastern Mediterranean. Ca. 2nd to 4th century A.D. 3/8"L. & 1/2"L.
 Private NYC collection, acquired from Ariadne Gallery, NYC., early 1980's.
 Est. \$750-\$1,000
 Closing: Tuesday, February 27th, 3:02 P.M.



393. Roman Carnelian Figural Intaglios (2)
 Eastern Mediterranean. Ca. 2nd to 4th century A.D. 7/16"L. & 1/2"L.
 Private NYC collection, acquired from Ariadne Gallery, NYC., early 1980's.
 Est. \$750-\$1,000
 Closing: Tuesday, February 27th, 3:04 P.M.



388. Sassanian Steatite Double Sided Seal
 Parthian, Eastern Empire. Ca. 5th century A.D. 2-7/8"W.
 Private NYC collection, acquired 1980's, ex. Samuel Eilenberg collection.
 Est. \$1,200-\$1,800
 Closing: Tuesday, February 27th, 2:54 P.M.



389. Sassanian Tan Agate Stamp Seal with Wolf & Puppies Impression
 Sassanian Empire. Ca. 5th century A.D. 1"W.
 Private NYC collection, ex. Samuel Eilenberg collection.
 Est. \$500-\$800
 Closing: Tuesday, February 27th, 2:56 P.M.



394. Sassanian Glass Stamp Seal with Floral Impression
 Sassanian Empire. Ca. 5th century A.D. 3/4"W.
 Private NYC collection, ex. Samuel Eilenberg collection.
 Est. \$400-\$600
 Closing: Tuesday, February 27th, 3:06 P.M.



395. Sassanian Carnelian Stamp Seal
 Sassanian Empire. Ca. 5th century A.D. 1"W.
 Private NYC collection, ex. Samuel Eilenberg collection.
 Est. \$400-\$600
 Closing: Tuesday, February 27th, 3:08 P.M.



390. Agate Intaglio with Bearded Man in Bronze Stamp Seal
 Middle East. Ca. 1st - 3rd century A.D. 7/8"W.
 Private NYC collection, acquired from Farian, 1982.
 Est. \$1,000-\$1,500
 Closing: Tuesday, February 27th, 2:58 P.M.



391. Sassanian Very Large Tan Agate Stamp Seal with Figures
 Sassanian Empire. Ca. 5th century A.D. 1"-1/4"W.
 Private NYC collection, ex. Samuel Eilenberg collection.
 Est. \$600-\$900
 Closing: Tuesday, February 27th, 3:00 P.M.



396. Sassanian Partial Stamp Seals (2)
 Sassanian Empire. Ca. 5th century A.D. 3/4" to 1"W.
 Private NYC collection, ex. Samuel Eilenberg collection.
 Est. \$400-\$600
 Closing: Tuesday, February 27th, 3:10 P.M.



397. Sassanian Dome Shaped Agate Seals (2)
 Sassanian Empire. Ca. 5th century A.D. 1/2"L. & 5/8"L.
 Private NYC collection, acquired from
 Henry Anavian, Sumer Gallery, NYC., 1981.
 Est. \$600-\$900
 Closing: Tuesday, February 27th, 3:12 P.M.



398. Agate Intaglio of Soldier's Helmet & Sword
 Eastern Mediterranean. Ca. 2nd to 4th century A.D. 7/16"L.
 Private NYC collection, acquired from Ariadne Gallery, NYC., early 1980's.
 Est. \$750-\$1,000
 Closing: Tuesday, February 27th, 3:14 P.M.



399. Sassanian Dome Stamp Seal with Ibex
 Sassanian Empire. Ca. 5th century A.D. 7/8"W.
 Private NYC collection, ex. Samuel Eilenberg collection.
 Est. \$400-\$600
 Closing: Tuesday, February 27th, 3:16 P.M.



400. Sassanian Carnelian Ring with Seal Impression
 Sassanian Empire. Ca. 5th century A.D. 7/8"W.
 Private NYC collection, ex. Samuel Eilenberg collection.
 Est. \$300-\$500
 Closing: Tuesday, February 27th, 3:18 P.M.



401. Sassanian Carnelian Intaglio Hair Ring
 Sassanian Empire. Ca. 5th-7th century A.D. ring size: 5-1/4
 Private NYC collection, acquired from Fortuna Fine Art, NYC.
 Est. \$400-\$600
 Closing: Tuesday, February 27th, 3:20 P.M.



402. Roman Carnelian Intaglios (2)
 Eastern Mediterranean. Ca. 2nd to 4th century A.D. 5/8"L. & 3/4"L.
 Private NYC collection, acquired from Ariadne Gallery, NYC., early 1980's.
 Est. \$600-\$900
 Closing: Tuesday, February 27th, 3:22 P.M.



403. Roman Intaglio & Three Sassanian Seals (4)
 Middle East. Ca. 5th century A.D. 1/2" to 1"W.
 Private NYC collection, ex. Sotheby's NYC., # 263/14.
 Est. \$800-\$1,000
 Closing: Tuesday, February 27th, 3:24 P.M.



404. Sassanian Hematite Conical Stamp Seal
 Sassanian Empire. Ca. 5th century A.D. 11/16"W.
 Private NYC collection, ex. Samuel Eilenberg collection,
 acquired from Muhammad Rahim, 1989.
 Est. \$400-\$600
 Closing: Tuesday, February 27th, 3:26 P.M.



405. Sassanian Banded Agate Stamp Seal with Camel Impression
 Sassanian Empire.
 Ca. 5th century A.D. 11/16"W.
 Private NYC collection, ex. Samuel Eilenberg collection.
 Est. \$500-\$800
 Closing: Tuesday, February 27th, 3:28 P.M.



406. Sassanian Unusual Agate Stamp Seal
 Sassanian Empire. Ca. 5th century A.D. 7/8"W.
 Private NYC collection, ex. Samuel Eilenberg collection.
 Est. \$400-\$600
 Closing: Tuesday, February 27th, 3:30 P.M.



407. Sassanian Green Jasper Stamp Seal with Opposing Lions
 Sassanian Empire. Ca. 5th century A.D. 11/16"W.
 Private NYC collection, ex. Samuel Eilenberg collection.
 Est. \$500-\$800
 Closing: Tuesday, February 27th, 3:32 P.M.



408. Roman Jasper Intaglio & Bloodstone Intaglio (2)
 Eastern Mediterranean. Ca. 2nd to 4th century A.D. 7/16"L. each.
 Private NYC collection, acquired from Ariadne Gallery, NYC., early 1980's.
 Est. \$750-\$1,000
 Closing: Tuesday, February 27th, 3:34 P.M.



409. Sassanian Carnelian Portrait Stamp Seals (2)
 Sassanian Empire. Ca. 5th century A.D. 5/8"W. each.
 Private NYC collection, ex. Samuel Eilenberg collection.
 Est. \$600-\$900
 Closing: Tuesday, February 27th, 3:36 P.M.



410. Sassanian Small Bronze & Silver Stamp Seals (3)
Sassanian Empire. Ca. 5th century A.D. 7/16" to 1/2"W.
Private NYC collection, ex. Samuel Eilenberg collection.
Est. \$400-\$600
Closing: Tuesday, February 27th, 3:38 P.M.



411. Sassanian/Parthian Steatite Stamp Seal
Middle East. Ca. 5th century A.D. 7/8"W.
Private NYC collection, ex. Samuel Eilenberg collection,
acquired from Muhammad Rahim, 1988.
Est. \$400-\$600
Closing: Tuesday, February 27th, 3:40 P.M.



416. Jemdet-Nasr Large Stone Seal
Asia Minor. Ca. 3rd millennium B.C. 1-3/8"L.
Private NYC collection, acquired from Henry Anavian,
Sumer Gallery, NYC., 1981.
Est. \$700-\$1,000
Closing: Tuesday, February 27th, 3:50 P.M.



417. Sassanian Lapis Lazuli 3-Sided Stamp Seal
Sassanian Empire. Ca. 5th century A.D. 1/2"W.
Private NYC collection,
ex. Samuel Eilenberg collection.
Est. \$600-\$900
Closing: Tuesday, February 27th, 3:52 P.M.



412. Sassanian Amethyst Cabochon Seal
Sassanian Empire. Ca. 5th century A.D. 1/2"W.
Private NYC collection, ex. Samuel Eilenberg collection.
Est. \$400-\$600
Closing: Tuesday, February 27th, 3:42 P.M.



413. Sassanian Shell Intaglio Portrait Seal
Sassanian Empire. Ca. 5th century A.D. 3/4"W.
Private NYC collection, ex. Samuel Eilenberg collection.
Est. \$400-\$600
Closing: Tuesday, February 27th, 3:44 P.M.



418. Sassanian Hematite Dome Shaped Stamp Seal
Sassanian Empire. Ca. 5th century A.D. 3/4"W.
Private NYC collection, ex. Samuel Eilenberg collection.
Est. \$500-\$800
Closing: Tuesday, February 27th, 3:54 P.M.



419. Achaemenid Steatite Seal of Two Goats & Tree
Middle East. Ca. 3rd century A.D. 3/4"L.
Private NYC collection, acquired from Ariadne Gallery, NYC., early 1980's.
Est. \$1,000-\$1,500
Closing: Tuesday, February 27th, 3:56 P.M.



414. Sassanian Small Stamp Seals (4)
Sassanian Empire. Ca. 5th century A.D. 7/16" to 1/2"W.
Private NYC collection, ex. Samuel Eilenberg collection.
Est. \$600-\$900
Closing: Tuesday, February 27th, 3:46 P.M.



415. Sassanian Agate Elliptical Shaped Seal
Sassanian Empire. Ca. 5th century A.D. 7/8"W.
Private NYC collection, ex. Samuel Eilenberg collection.
Est. \$400-\$600
Closing: Tuesday, February 27th, 3:48 P.M.



420. Ancient Beads & Seals (3)
Eastern Mediterranean. Ca. 2nd to 4th century A.D. 5/8" to 3/4"L.
Private NYC collection, acquired from Ariadne Gallery, NYC., early 1980's.
Est. \$750-\$1,000
Closing: Tuesday, February 27th, 3:58 P.M.



421. Sumerian Shell Amulets (3)
Middle East. Ca. 3rd - 2nd millennium B.C. 3/4" to 7/8"L.
Private NYC collection, acquired from Fortuna Fine Art, NYC., early 1980's.
Est. \$400-\$600
Closing: Tuesday, February 27th, 4:00 P.M.



422. Roman Amber Medusa Cameo
Eastern Mediterranean. Ca. 1st-3rd century A.D. 1-1/8"W.
Ex. Edward J. Smith collection, Weehawken, NJ., before 1975.
Est. \$4,000-\$5,000
Closing: Tuesday, February 27th, 4:02 P.M.



423. Roman Bearded Face Cameo
Eastern Mediterranean. Ca. 1st - 3rd century A.D. 1"L.
Private NYC collection, acquired from Ariadne Gallery, NYC., early 1980's.
Est. \$1,500-\$2,500
Closing: Tuesday, February 27th, 4:04 P.M.



428. Roman Facial Cameo with Partial Bezel
Eastern Mediterranean. Ca. 1st - 3rd century A.D. 3/4"L.
Private NYC collection, acquired from Henry Anavian,
Sumer Gallery, NYC., 1981.
Est. \$1,000-\$1,500
Closing: Tuesday, February 27th, 4:14 P.M.



429. Roman Large Agate Intaglios (2)
Eastern Mediterranean. Ca. 1st-3rd century A.D. 1"L. & 1-1/16"L.
Private NYC collection, acquired from
Ariadne Gallery, NYC., early 1980's.
Est. \$600-\$900
Closing: Tuesday, February 27th, 4:16 P.M.



424. Roman Carnelian Intaglios (2)
Eastern Mediterranean. Ca. 2nd to 4th century A.D. 1/2"L. & 5/8"L.
NYC collection, acquired from Ariadne Gallery, NYC., early 1980's.
Est. \$1,000-\$1,500
Closing: Tuesday, February 27th, 4:06 P.M.



425. Roman Agate Figural Intaglios (2)
Eastern Mediterranean. Ca. 2nd to 4th century A.D. 1/2"L. & 5/8"L.
Private NYC collection, acquired from Ariadne Gallery, NYC., early 1980's.
Est. \$1,000-\$1,500
Closing: Tuesday, February 27th, 4:08 P.M.



430. Roman Intaglios & Sassanian Seals (6)
Middle East. Ca. 5th century A.D. 5/16" to 5/8"W.
Private NYC collection, ex. Sotheby's NYC., # 263/14.
Est. \$800-\$1,200
Closing: Tuesday, February 27th, 4:18 P.M.



431. Sumerian Stone Animal Form Amulets (3)
Middle East. Ca. 3rd - 2nd millennium B.C. 3/4" to 1-1/16"L.
Private NYC collection, acquired from Henry Anavian,
Sumer Gallery, NYC., 1981 and 1982.
Est. \$600-\$900
Closing: Tuesday, February 27th, 4:20 P.M.



426. Roman Carnelian Lion Intaglio Silver Ring
Eastern Mediterranean. Ca. 1st-3rd century A.D. for intaglio.
ring size: 7-3/4 intaglio: 3/8"W.
Private NYC collection, acquired from Fortuna Fine Art, NYC.
Est. \$800-\$1,200
Closing: Tuesday, February 27th, 4:10 P.M.



427. Sassanian Intaglio Ring
Eastern Empire. Ca. 5th century A.D.
1"W. ring size: 6 intaglio size: 3/4"W.
Private NYC collection, ex. Derek Content, 1980's.
Est. \$1,000-\$1,500
Closing: Tuesday, February 27th, 4:12 P.M.



432. Sassanian Stone Seals (4)
Middle East. Ca. 5th century A.D. 7/16" to 9/16"W.
Private NYC collection, ex. Sotheby's NYC., # 263/14.
Est. \$500-\$800
Closing: Tuesday, February 27th, 4:22 P.M.



433. Sassanian Silver & Gold Ring with Carnelian Figural Intaglio
Sassanian Empire. Ca. 5th-7th century A.D. ring size: 6-1/4. intaglio: 1/2"W.
Private NYC collection, acquired from Fortuna Fine Art, NYC.
Est. \$600-\$900
Closing: Tuesday, February 27th, 4:24 P.M.



434. Roman Gold Ring with Jasper Intaglio
Eastern Mediterranean. Ca. 1st-3rd century A.D. ring size: 5-3/4.
Ex. Sumer Gallery, NYC., ex. Henry Anavian.
Est. \$2,500-\$3,500
Closing: Tuesday, February 27th, 4:26 P.M.



435. Sassanian Gold Ring with Lapis Boar Intaglio
Afghanistan, Sassanian Empire. Ca. 5th-7th century A.D.
ring size: 8-1/2 intaglio: 11/16"W. Private NYC collection,
acquired from Fortuna Fine Art, NYC.
Est. \$1,000-\$1,500
Closing: Tuesday, February 27th, 4:28 P.M.



440. Sassanian Gold Ring with Large Lapis Intaglio
Sassanian Empire.
Ca. 5th-7th century A.D.
ring size: 9 intaglio: 3/4"W. Private NYC collection,
acquired from Fortuna Fine Art, NYC.
Est. \$800-\$1,200
Closing: Tuesday, February 27th, 4:38 P.M.



441. Sassanian Bronze Ring with Carnelian Pegasus Intaglio
Sassanian Empire.
Ca. 5th-7th century A.D.
ring size: 5-1/2 intaglio: 5/8"W. Private NYC
collection, acquired from Fortuna Fine Art, NYC.
Est. \$600-\$900
Closing: Tuesday, February 27th, 4:40 P.M.



442. Sassanian Gold Ring with Large Oval Intaglio
Sassanian Empire. Ca. 5th-7th century A.D.
1-1/4"W. ring size: 6-1/2 intaglio: 15/16"W.
Private NYC collection,
acquired from Fortuna Fine Art, NYC.
Est. \$1,000-\$1,500
Closing: Tuesday, February 27th, 4:42 P.M.



436. Gold Intaglio Ring
Eastern Mediterranean. Intaglio: 1st-2nd century A.D. Size 6-1/2 finger ring.
Private NYC collection, ex. Derek J. Content, UK.
Est. \$1,500-\$2,500
Closing: Tuesday, February 27th, 4:30 P.M.



437. Gold Ring with Sassanian Camel Intaglio
Sassanian Empire. Ca. 5th-7th century A.D. ring size: 8-1/2 intaglio: 11/16"W.
Private NYC collection, acquired from Fortuna Fine Art, NYC.
Est. \$1,000-\$1,500
Closing: Tuesday, February 27th, 4:32 P.M.



443. Roman Intaglio in Gold Ring
Eastern Mediterranean. Ca. 1st-3rd century A.D.
ring size: 5-1/2 intaglio: 1/2"W.
Private NYC collection. Ex. London Market, 1990's.
Est. \$500-\$1,000
Closing: Tuesday, February 27th, 4:44 P.M.



444. Sassanian Bronze Ring with Lapis Animal Intaglio
Sassanian Empire. Ca. 5th-7th century A.D.
ring size: 10 intaglio: 7/16"W.
Private NYC collection, acquired from Fortuna Fine Art, NYC.
Est. \$600-\$900
Closing: Tuesday, February 27th, 4:46 P.M.



438. Sassanian Gold Ring with Carved Intaglio
Parthian, Sassanian Empire. Ca. 4th-7th century A.D.
15/16"W. ring size: 4-1/4 intaglio: 1/2"W.
Private NYC collection, acquired from Fortuna Fine Art, NYC.
Est. \$800-\$1,200
Closing: Tuesday, February 27th, 4:34 P.M.



439. Islamic Gold Finger Ring with Crystal Cabochon
Middle East.
Ca. 800-1200 A.D. Ring size: 11
Private NYC collection. Ex. London Market, 1990's.
Est. \$700-\$1,000
Closing: Tuesday, February 27th, 4:36 P.M.



445. Silver Intaglio Ring with Gold Bezel
Sassanian Empire. Ca. 5th-7th century A.D. ring size: 8-1/2 intaglio: 3/8"W.
Private NYC collection, acquired from Fortuna Fine Art, NYC.
Est. \$600-\$900
Closing: Tuesday, February 27th, 4:48 P.M.



446. Sassanian Gold Ring with Small Carnelian Intaglio
Sassanian Empire. Ca. 5th-7th century A.D. ring size: 6 intaglio: 1/4"W.
Private NYC collection, acquired from Fortuna Fine Art, NYC.
Est. \$500-\$800
Closing: Tuesday, February 27th, 4:50 P.M.



447. Roman Large Gold Earrings
Eastern Mediterranean.
Ca. 1st-3rd century A.D. 1-11/16"L.
Ex. Edward J. Smith collection, Weehawken, NJ., before 1975.
Est. \$1,500-\$2,000
Closing: Tuesday, February 27th, 4:52 P.M.



448. Roman Pair of Gold Earrings
Eastern Mediterranean. Ca. 1st-3rd century A.D. 1/2"W. 6 gms. twt.
Private NYC collection, by descent from
Frishman Galleries, Tel Aviv, acquired 1970's.
Est. \$800-\$1,200
Closing: Tuesday, February 27th, 4:54 P.M.



449. Parthian Gold Earrings
Eastern Empire. Ca. 100 B.C. - 200 A.D. 5/16"D. 3/8"H.
Private NYC collection, ex. Derek J. Content, UK.
Est. \$1,000-\$1,500
Closing: Tuesday, February 27th, 4:56 P.M.



450. Roman Pair of Gold Earrings
Eastern Mediterranean. Ca. 1st-3rd century A.D. 1-3/4"L.
Collection of Mary K. F. Leong, WA., 1980-1990.
Est. \$500-\$800
Closing: Tuesday, February 27th, 4:58 P.M.



451. Sassanian Silver & Gold Ring with Agate Cabochon Stone
Sassanian Empire. Ca. 5th-7th century A.D. ring size: 6-1/2.
Private NYC collection, acquired from Ariadne Gallery, NYC., early 1980's.
Est. \$600-\$900
Closing: Tuesday, February 27th, 5:00 P.M.



452. Egyptian New Kingdom Silver Finger Rings
Egypt. Ca. 1550-712 B.C. ring sizes: 2-1/2 & 5.
Private NYC collection, brought to USA
prior to 1948, to present owner by descent.
Est. \$800-\$1,200
Closing: Tuesday, February 27th, 5:02 P.M.



453. Middle Kingdom Faience Beaded Necklace
Egypt. Middle Kingdom, ca. 2030-1640 B.C.
19-1/2"L. Private NYC collection, brought to USA
prior to 1948, to present owner by descent.
Est. \$3,000-\$5,000
Closing: Tuesday, February 27th, 5:04 P.M.



454. New Kingdom to Roman Beaded Necklace
Egypt. Ca. 1500 B.C. - 100 A.D. 22"L.
Private NYC collection, brought to USA prior
to 1948, to present owner by descent.
Est. \$1,000-\$1,500
Closing: Tuesday, February 27th, 5:06 P.M.



455. Amarna Period Faience Disc Beaded Necklace
Egypt. Ca. 18th-19th dynasty, 1350-1150 B.C.
18"L. Private NYC collection, brought to USA prior to
1948, to present owner by descent.
Est. \$3,000-\$5,000
Closing: Tuesday, February 27th, 5:08 P.M.



456. Egyptian Mummy Bead Necklaces (2)
Egypt. Late Period, ca. 700-30 B.C. 19"L. (necklace with pendant strand)
1-1/4"L. (pendant) 19-7/8"L. (triple strand necklace)
Collection of Mary K. F. Leong, WA., 1980-1990.
Est. \$300-\$500
Closing: Tuesday, February 27th, 5:10 P.M.



457. Roman/Egyptian Gold Bees (15)
Egypt.
Ca. 1st century B.C.-2nd century A.D. 1/2"W.
Ex. Sumer Gallery, NYC., Henry Anavian, NYC., 1990.
Est. \$3,000-\$5,000
Closing: Tuesday, February 27th, 5:12 P.M.



458. Roman Marble Head of Athena
Probably Athena Vescovali type. Ca. 2nd century A.D. 5-5/8"H.
Private West Coast collection. Ex. Washington state auction,
(2016), from an old estate collection from Seattle.
Est. \$5,000-\$8,000
Closing: Wednesday, February 28th, 10:00 A.M.



459. Roman Stone Head of a Youth
Eastern Mediterranean. Possible Gandharian influence.
Late Roman, ca. 3rd-4th century A.D. 5-1/2"H. x 4-1/2"W.
Collection of Howard Kaminsky, NYC., acquired from Mythological Art,
NYC., (Abram Epstein), 1980's to early 1990's.
Est. \$3,000-\$5,000
Closing: Wednesday, February 28th, 10:02 A.M.



460. Apulian Red-Figure Painted Fish Plate
Alupia. Ca. 350 B.C. 3-1/8"H. x 8-1/4"W.
Collection of Mary K. F. Leong, WA., acquired from
Le Futur Anterieur, France. Item # 7083. Old certificate included.
Est. \$3,000-\$5,000
Closing: Wednesday, February 28th, 10:04 A.M.



461. Roman Alabaster Head of a Youth
Eastern Mediterranean.
Ca. 1st-2nd century A.D. 4"H.
Private NJ collection, acquired 20 years ago.
Est. \$3,000-\$5,000
Closing: Wednesday, February 28th, 10:06 A.M.



462. Mycenean Phi Idol
Magna Graecia. Ca. 1400-1300 B.C. 4-1/2"H.
Collection of Swanhild Castle,
Brooklyn, NY., acquired 1960's.
Est. \$1,000-\$1,500
Closing: Wednesday,
February 28th, 10:08 A.M.



463. Roman Bronze Plumbob
Eastern Mediterranean.
Ca. 1st-3rd century A.D. 4-1/2"L.
Private German collection,
from Axel Weber, Koln, 1960's.
Est. \$2,500-\$3,500
Closing: Wednesday, February 28th, 10:10 A.M.



464. Roman Bone Figure of Aphrodite
Egypt or Middle East.
Ca. 1st century A.D. 3-1/2"H.
Collection of Elaine Lustig Cohen.
Est. \$800-\$1,200
Closing: Wednesday,
February 28th, 10:12 A.M.



465. Corinthian Warrior Aryballos
Greek. Ca. 6th century B.C. 2-1/4"H. x 2-3/8"D.
Collection of Swanhild Castle, Brooklyn, NY., acquired 1960's.
Est. \$600-\$900
Closing: Wednesday, February 28th, 10:14 A.M.

466. Hellenistic Bronze Horse Bit
Eastern Mediterranean. Ca. 300 B.C. 8-1/8"H. x 11-3/4"W.
Private NYC collection, by descent from
Frishman Galleries, Tel Aviv, acquired 1960's.
Est. \$2,000-\$3,000
Closing: Wednesday, February 28th, 10:16 A.M.



467. Hellenistic Heads & Figure (3)
Eastern Mediterranean. Ca. 4th-3rd century B.C. 5-1/2"H., 4"H. & 3-1/4"H.
Estate of Hannelore Schulhof, collection of Rudolph B. and
Hannelore B. Schulhof, Kings Point, NY., 1950's-1970's.
Est. \$800-\$1,200
Closing: Wednesday, February 28th, 10:18 A.M.



468. Roman Large Bronze Oil Lamp
Afghanistan. Ca. 300 B.C.-200 A.D. 10-1/2"W.
Ex. NYC collection, acquired 1990.
Est. \$6,000-\$9,000
Closing: Wednesday, February 28th, 10:20 A.M.



469. Bronze Four Candle Candelabra
Byzantine, Egypt. Ca. 900-1300 A.D. 5-7/8"H.
Private Florida collection, acquired in Switzerland, 1950's.
Est. \$4,000-\$6,000
Closing: Wednesday, February 28th, 10:22 A.M.



470. Roman Bronze Torch Bowl
Eastern Mediterranean.
Ca. 1st-3rd century A.D. 4-1/4"H. x 4"D.
Ex. Harmer Rooke Galleries, NYC., 1970's.
Est. \$600-\$900
Closing: Wednesday, February 28th, 10:24 A.M.



471. Roman Terra Sigilata Portrait Vessel
North Africa.
Ca. 5th century A.D. 9-1/16"H.
Ex. Philip's, London, 1978.
Est. \$1,000-\$1,500
Closing: Wednesday, February 28th, 10:26 A.M.



472. Roman-Syrian Lead Sarcophagus Panel
Middle East. Ca. 1st-3rd century A.D. 22"L. x 17"H.
Collection of Howard Kaminsky, NYC., acquired from
Mythological Art, NYC., (Abram Epstein), 2/1/1989.
Est. \$1,200-\$1,800
Closing: Wednesday, February 28th, 10:28 A.M.



473. Sassanian/Islamic Cut Glass Teal Bottle
Middle East. Ca. 5th century A.D.
4-1/8"H. x 2-3/4"W.
NYC collection, acquired early 1980's
from Sumer Gallery, Henry Anavian.
Est. \$4,000-\$6,000
Closing: Wednesday, February 28th, 10:30 A.M.



474. Large Sassanian/Islamic Cut Glass
Middle East.
Ca. 5th-6th century A.D. 8-3/8"H.
NYC collection, acquired early 1980's from
Sumer Gallery, Henry Anavian.
Est. \$6,500-\$9,500
Closing: Wednesday, February 28th, 10:32 A.M.



475. Roman Tall Glass Amphoriskos
Roman.
Ca. 2nd-3rd century A.D. 10-1/4"H.
NYC. collection, acquired from Harmer Rooke
Galleries, NYC., 1980's.
Est. \$1,000-\$1,500
Closing: Wednesday, February 28th, 10:34 A.M.



476. Byzantine Blue Cut Glass Cup
Middle East. Ca. 5th - 7th century A.D. 3-1/2"H. x 4-1/8"D.
NYC collection, acquired early 1980's from
Sumer Gallery, Henry Anavian.
Est. \$6,000-\$9,000
Closing: Wednesday, February 28th, 10:36 A.M.



477. Sassanian Cut Glass "Coin Spot" Bowl
Middle East. Ca. 7th century A.D. 3-1/8"H. x 3-3/4"D.
Private NYC collection, by descent from
Frishman Galleries, Tel Aviv, acquired 1950's.
Est. \$1,000-\$1,500
Closing: Wednesday, February 28th, 10:38 A.M.



478. Roman Glass Small Bowl
 Eastern Mediterranean. Ca. 1st-3rd century A.D.
 2-1/2"H. x 5-3/8"W. Collection of Elaine Lustig Cohen.
 Est. \$600-\$900
 Closing: Wednesday, February 28th, 10:40 A.M.



479. Roman Green Glass Bowl
 Eastern Mediterranean. Ca. 1st-3rd century A.D.
 3-1/8"H. x 7"W. Collection of Elaine Lustig Cohen.
 Est. \$900-\$1,300
 Closing: Wednesday, February 28th, 10:42 A.M.



484. Egyptian Large Pre-Dynastic Alabaster Bowl
 Egypt. Ca. 3100-2700 B.C. 5-1/4"H. x 7-3/4"D.
 Private NYC collection, brought to USA
 prior to 1948, to present owner by descent.
 Est. \$4,000-\$6,000
 Closing: Wednesday, February 28th, 10:52 A.M.



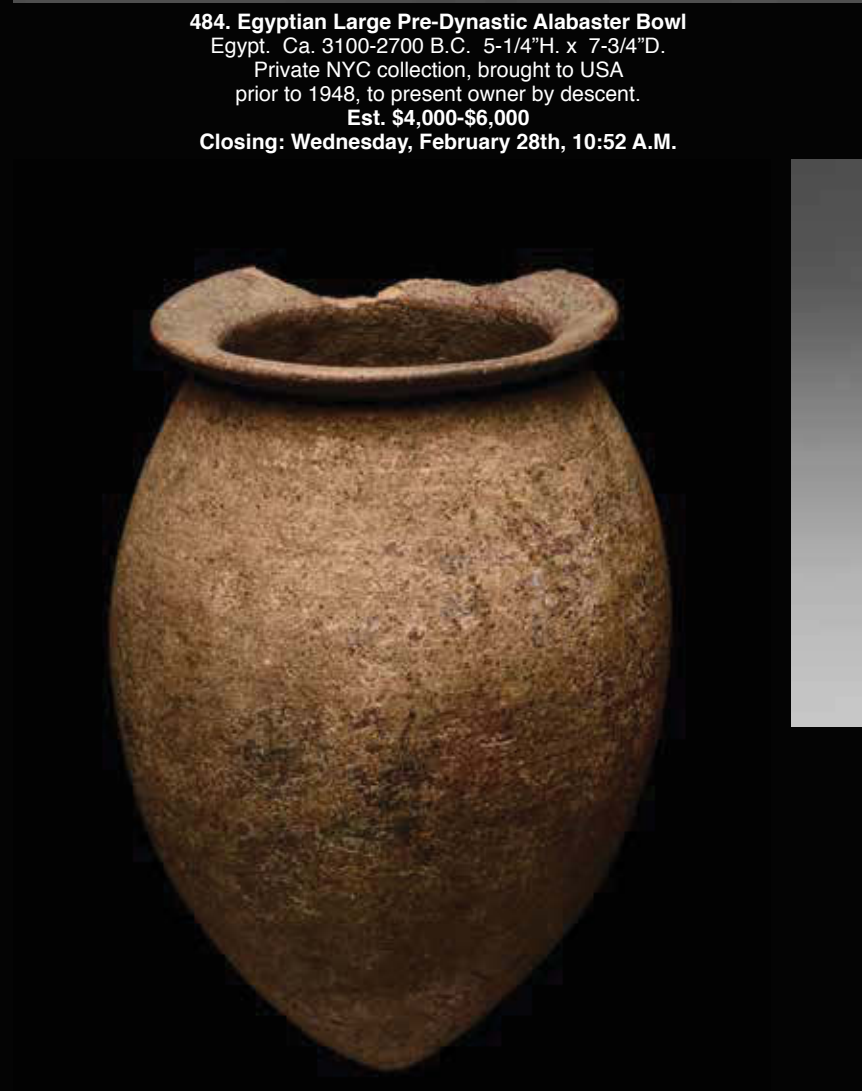
485. Egyptian Pre-Dynastic Decorated Jar
 Egypt. Pre-dynastic Period, Naqada II, ca. 3600-3200 B.C. 6"H.
 Private NYC collection, brought to USA prior to 1948,
 to present owner by descent.
 Est. \$7,500-\$10,000
 Closing: Wednesday, February 28th, 10:54 A.M.



480. Roman Glass Bowl & Plate (2)
 Eastern Mediterranean. Ca. 1st-3rd century A.D.
 1-1/4"H. x 4-1/2"D. & 1-1/4"H. x 7"D.
 Private NYC collection, by descent from
 Frishman Galleries, Tel Aviv, acquired 1950's.
 Est. \$1,000-\$1,500
 Closing: Wednesday, February 28th, 10:44 A.M.



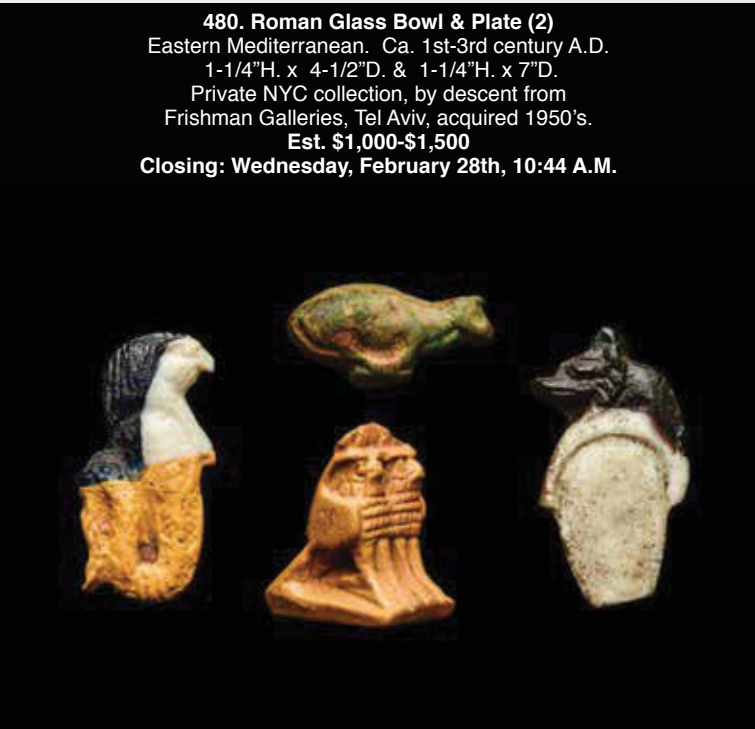
481. Roman Glass Vessel & Bottles (3)
 Eastern Mediterranean.
 Ca. 1st-3rd century A.D.
 3-3/4" to 5-1/4"H. Collection of
 Elaine Lustig Cohen.
 Est. \$800-\$1,200
 Closing: Wednesday, February 28th, 10:46 A.M.



486. Pre-Dynastic Egyptian Vessel
 Egypt. Ca. 3100-2700 B.C. 5-1/4"H.
 Collection of William Siegmann, Curator
 Emeritus, Brooklyn Museum.
 Est. \$1,200-\$1,800
 Closing: Wednesday,
 February 28th, 10:56 A.M.



487. Pre-Dynastic Ferrous Limestone Small Bowl
 Egypt. Ca. 3100-2700 B.C. 1-3/4"H. x 2-7/8"W.
 Private NYC collection, brought to USA prior to 1948,
 to present owner by descent.
 Est. \$1,000-\$1,500
 Closing: Wednesday,
 February 28th, 10:58 A.M.



482. Egyptian Paste Glass Items (4)
 Egypt. Late Period, ca. 700-30 B.C. 3/4" to 1-1/4"W.
 Ex. Bonham's, London, 1970's.
 Est. \$1,500-\$2,500
 Closing: Wednesday, February 28th, 10:48 A.M.



483. Egyptian or Bactrian Marble Bowl
 Central Asia or Egypt. Ca. 2nd - 1st millennium B.C. 2-1/4"H. 4-1/8"W.
 Collection of Swanhild Castle, Brooklyn, NY., acquired 1960's.
 Est. \$800-\$1,200
 Closing: Wednesday, February 28th, 10:50 A.M.



488. Amethyst Bast Amulet
Egypt. Late Period, ca. 700-30 B.C. 1"H. x 1-3/8"L.
Ex. H. Schaeffer, Karlsruhe, Germany, acquired prior to 1980.
Est. \$9,000-\$12,000
Closing: Wednesday, February 28th, 11:00 A.M.



489. Middle Kingdom Basalt Jar on Integral Base
Egypt. Middle Kingdom, ca. 2030-1640 B.C. 2"H. x 1-3/4"W.
Private NYC collection, brought to USA prior to 1948, to present owner by descent.
Est. \$3,000-\$5,000
Closing: Wednesday, February 28th, 11:02 A.M.



490. Middle Kingdom Faience Vessel Fragment
Egypt. Middle Kingdom, ca. 2030-1640 B.C. 3"H.
Private NYC collection, brought to USA prior to 1948, to present owner by descent.
Est. \$2,000-\$3,000
Closing: Wednesday, February 28th, 11:04 A.M.

491. Egyptian Lapis Miniature Stone Vessel
Egypt. Ca. 1000-30 B.C. 1-1/16"H.
Ex. M.A. Ryun, Dallas, TX.
Est. \$2,000-\$2,500
Closing: Wednesday, February 28th, 11:06 A.M.

492. Egyptian Red Paste Glass Cow
Egypt. New Kingdom/Third Intermediate Period, ca. 1000 B.C.
1-3/8"W. Ex. C.M. Ward collection, London.
Est. \$500-\$800
Closing: Wednesday, February 28th, 11:08 A.M.



493. New Kingdom Blue Faience Jar
Egypt. Ca. 1550-712 B.C. 3-5/8"H.
Private NYC collection, brought to USA prior to 1948, to present owner by descent.
Est. \$2,500-\$3,500
Closing: Wednesday, February 28th, 11:10 A.M.



496. Greco-Egyptian Alabastron
Egypt. Ca. 4th-2nd century B.C. 7-5/8"H.
Ex. M.A. Ryun collection, Dallas, TX.
Est. \$4,000-\$5,000
Closing: Wednesday, February 28th, 11:16 A.M.



494. Egyptian Hyksos Period Terracotta Female Figure
Egypt. Hyksos Period, 15th-16th dynasty, ca. 1640-1532 B.C. 4-7/8"H.
Private NYC collection, brought to USA prior to 1948, to present owner by descent.
Est. \$4,000-\$6,000
Closing: Wednesday, February 28th, 11:12 A.M.



495. Egyptian Steatite Sekh-met
Egypt. 3rd intermediate to late period, ca. 1000-30 B.C. 3-5/8"H.
Collection of Ernest C. Freemark (1882 - 1966), Elmore, Ohio.
Est. \$9,000-\$12,000
Closing: Wednesday, February 28th, 11:14 A.M.



497. Egyptian Indurated Limestone Flying Scarab
Egypt. Middle Kingdom to late Period, ca. 1200-30 B.C. 1-3/4"H. x 3-5/8"L.
Ex. C.M. Ward collection, London, collected before 1980.
Est. \$1,800-\$2,500
Closing: Wednesday, February 28th, 11:18 A.M.



498. Faience Toth Amulet
Egypt. Late Period, ca. 700-30 B.C. 2-3/8"L.
Ex. Sotheby's 12/1971, # 89. ex. Alan Ownes, CT.
Est. \$9,000-\$12,000
Closing: Wednesday, February 28th, 11:20 A.M.



499. Egyptian Lapis Ibis with Maat Feather Amulet
Egypt. Late Period, ca. 700-30 B.C.
1-5/16"H. x 1-3/4"L. Ex. J.H.H. Claessen, Bladel, Holland, collection formed prior to 1975.
Est. \$6,000-\$8,000
Closing: Wednesday, February 28th, 11:22 A.M.



500. Egyptian Bes Amulet
Egypt. Late Period, ca. 700-30 B.C. 2-1/2"L.
Ex. Suzanne Khayat, NYC., 1950's.
Est. \$4,500-\$5,500
Closing: Wednesday, February 28th, 11:24 A.M.



501. Egyptian Bronze Osiris
Egypt. Late Period, ca. 700-30 B.C. 4-3/4"H.
Collection of Swanhild Castle, Brooklyn, NY., acquired 1960's.
Est. \$1,200-\$1,800
Closing: Wednesday, February 28th, 11:26 A.M.



502. Egyptian Mummy Mask
Egypt. Late period, ca. 700-30 B.C.
8-1/4"H. x 5-1/4"W. Collection of Swanhild Castle, Brooklyn, NY., acquired 1960's.
Est. \$1,000-\$1,500
Closing: Wednesday, February 28th, 11:28 A.M.



503. Large Seated Bronze Osiris
Egypt. Late period, ca. 700-30 B.C. 9-1/4"H.
Collection of Swanhild Castle, Brooklyn, NY., acquired 1960's.
Est. \$1,500-\$2,500
Closing: Wednesday, February 28th, 11:30 A.M.



504. Large Egyptian Wood Mummy Mask
Egypt. Late period, ca. 700-30 B.C. 24"H.
Collection of Mary K. F. Leong, WA., acquired from Charles Ede Limited, London, 1985, with original sales receipt.
Est. \$8,000-\$12,000
Closing: Wednesday, February 28th, 11:32 A.M.

505. Egyptian Sandstone Relief with Portrait of Queen
Egypt. Late Period, ca. 700-30 B.C. or earlier. 9-1/4"H. x 16"W.
Collection of Mary K. F. Leong, WA., acquired from Royal Athena Gallery, 1970's,
NYC, inv. # CNJ03, with original gallery label on base. Early collection # "20" painted
on reverse.
Est. \$7,500-\$10,000
Closing: Wednesday,
February 28th,
11:34 A.M.



506. Egyptian Limestone Fragment of Sobek
Egypt. Late period, ca. 700-30 B.C. 8-7/8" x 6-1/4".
Private NYC collection, brought to USA prior to 1948,
to present owner by descent.
Est. \$8,000-\$12,000
Closing: Wednesday,
February 28th,
11:36 A.M.



507. Large Wooden Sarcophagus Front
Egypt. Late period, ca. 700-30 B.C. 24-1/2"H. x 14-3/4"W. Ex. J. Levin,
Auktionskompaniet Stockholm City AB, Sweden, 10/15/2006, # 303,
ex. Andreasson family collection, purchased Sweden, late 1960's.
Est. \$18,000-\$25,000 **Closing: Wednesday, February 28th, 11:38 A.M.**

508. Egyptian Limestone Head
Egypt. Late period, ca. 700-30 B.C. 5-1/4"H.
Private Connecticut collection. Ex. Matthias Komor, NYC., mid 1960's,
with original Komor label affixed, # E964. Ex. American collection,
acquired late 1940's.
Est. \$8,000-\$12,000 **Closing: Wednesday, February 28th, 11:40 A.M.**



509. Egyptian Granite Offering Table
Egypt. Late Period, ca. 700-30 B.C.
13"W. x 13"H. x 2"D.
Collection of Mary K. F. Leong,
WA., 1980-1990.
Est. \$4,000-\$6,000
Closing: Wednesday,
February 28th,
11:42 A.M.



512. Roman-Egyptian Limestone Head of Silenus
Egypt. Ca. 2nd-3rd century A.D. 9"H. x 7"W.
Collection of Howard Kaminsky, NYC., acquired from
Mythological Art, NYC, (Abram Epstein),
March 7th, 1991, with original correspondence.
Est. \$8,000-\$12,000
Closing: Wednesday,
February 28th,
11:48 A.M.



510. Roman-Egypt Stucco Mummy Mask
Roman-Egypt. Hadrianic period, ca. 2nd century
A.D. 9-1/2"H. x 6-1/2"W.
Private NYC collection, brought to USA prior to
1948, to present owner by descent.
Est. \$7,500-\$10,000
Closing: Wednesday, February 28th, 11:44 A.M.



511. Later Imperial Roman Marble Head of Eros
Egypt, with Gandharan influence.
Ca. 3rd century A.D. 8-15/16"H.
Private NYC collection, brought to USA prior to
1946, to present owner by descent. Published:
Antiquarium Ltd. Ancient Treasures XIV, p.32. cf.
The Ashmolean Museum, Oxford, 1996.68. The
Metropolitan Museum of Art, New York, acc. nos.
1987.424.23 and 1987.142.386a-c.
Est. \$15,000-\$25,000
Closing: Wednesday, February 28th, 11:46 A.M.



**513. Egyptian Steatite Figure
of Bastet with Gold Earring**
Egypt. Late period to early Ptolemaic. 4"H.
Private NYC collection, brought to USA prior to
1948, to present owner by descent.
Est. \$7,500-\$10,000
Closing: Wednesday, February 28th, 11:50 A.M.



514. Egyptian Bronze & Stone Ibis
Egypt. Late period, ca. 700-30 B.C.
3-1/2"H. x 4-1/4"L. NYC collection, acquired
from Bonham's, London, 1990's.
Est. \$4,000-\$6,000
Closing: Wednesday, February 28th, 11:52 A.M.

515. Egyptian Steatite Frog Seal
Egypt. New Kingdom, 19th-20th dynasty,
1320-1085 BC. 7/8"H. x 1-1/2"L.
Ex. C.M. Ward collection, London.
Est. \$3,000-\$4,000
Closing: Wednesday, February 28th, 11:54 A.M.

516. Egyptian Paste Glass Inlay Face
Egypt. Late Period, ca. 700-30 B.C. 2"W.
NYC collection. Acquired at
Bonham's, London, 1970's.
Est. \$2,000-\$3,000
Closing: Wednesday, February 28th, 11:56 A.M.



517. Egyptian Wood Sek-Met

Egypt. Late Period, ca. 700-30 B.C.
3-7/8"H. x 1-7/8"L. Ex. Aweidah Gallery,
acquired in Egypt, 1960's.
Est. \$1,000-\$1,500

Closing: Wednesday, February 28th, 11:58 A.M.



518. Egyptian Wood Sarcophagus Panel with Anubis

Egyptian. Late period, ca. 700-30 B.C.
15-1/2"H. x 5-1/4"W. Collection of Swanbild Castle,
Brooklyn, NY., acquired 1960's.
Est. \$600-\$900

Closing: Wednesday, February 28th, 12:00 Noon



519. Egyptian Tauret Amulet

Egypt. Late period, ca. 700-30 B.C. 2"H.
Ex. Bonham's, 1990's.
Est. \$800-\$1,200

Closing: Wednesday, February 28th, 12:02 P.M.



523. Coptic Limestone Stele

Egypt. Ca. 5th-7th century A.D. 8-1/4"H. x 11" wide.
Ex. Chickie Rosenberg collection, NJ., acquired from Arte Primitivo in 1999.
Est. \$1,000-\$1,500

Closing: Wednesday, February 28th, 12:10 P.M.



524. Egyptian Steatite Cylinder Seal with Anubis

Egypt. Ca. 2nd-1st millennium B.C. 15/16"L.
Ex. M.A. Ryun, Dallas, TX., purchased in London before 1980.
Est. \$1,600-\$2,200

Closing: Wednesday, February 28th, 12:12 P.M.



525. Egyptian Nefer Amulet & Phoenician Egyptianizing Head (2)

Egypt and Middle East. New Kingdom to Late period, 1000-30 B.C.
1/2"L. & 1/4"L. Private NYC collection, acquired from
Ariadne Gallery, NYC., early 1980's.
Est. \$700-\$1,000

Closing: Wednesday, February 28th, 12:14 P.M.



526. Faience Face & Cow (2)

Egypt.
Ca. 3rd Intermediate Period - Late Period, ca. 1000 B.C.
3/4"W. (face)11/16"W (cow) Ex. C.M. Ward collection, London.
Est. \$700-\$900

Closing: Wednesday, February 28th, 12:16 P.M.



520. Egyptian Large Steatite Scarab

Egypt. New Kingdom, 19th-20th dyn. 1320-1085 BC. to Late Period, 700 B.C.
1-1/8"L. Ex. J.H.H. Claessen, Bladel, Holland, collection formed prior to 1975.
Est. \$500-\$800

Closing: Wednesday, February 28th, 12:04 P.M.



521. Egyptian Blue Glazed Scarabs (2)

Egypt. Ca. 1450 B.C. 3/4" & 1/2"L.
Private NYC collection, brought to USA prior to 1948,
to present owner by descent.
Est. \$800-\$1,200

Closing: Wednesday, February 28th, 12:06 P.M.



522. Egyptian Scarab & Uzat Earrings (2)

Egypt. Late Period, ca. 700-30 B.C. 3/4"L. (scarab pair) 1/2"L.
(scarabs) 1-1/8"L. (uzat pair) 1/2"L. (uzats)
Collection of Mary K. F. Leong, WA., 1980-1990.
Est. \$600-\$900

Closing: Wednesday, February 28th, 12:08 P.M.



527. Khnum & Hapi Faience Amulet

Egypt. Ptolemaic period, ca. 300-30 B.C. 1"H. x 1-1/2"L.
Private NYC collection, brought to USA prior to 1948,
to present owner by descent.
Est. \$1,500-\$2,500

Closing: Wednesday, February 28th, 12:18 P.M.



528. Egyptian Bronzes Figures (2)

Egypt. Late period, 700-30 B.C. 1-1/2"H. x 2-1/8"H.
Private NYC collection, by descent from
Frishman Galleries, Tel Aviv, acquired 1960's.
Est. \$1,000-\$1,500

Closing: Wednesday, February 28th, 12:20 P.M.

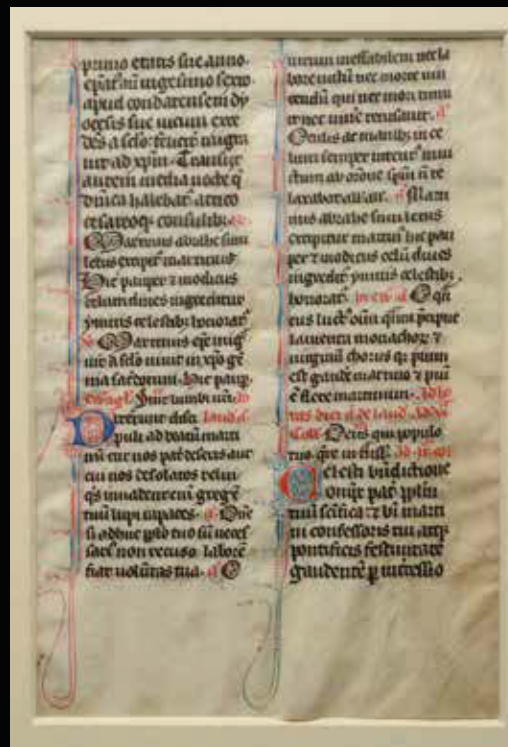
529. European Fancy Boxwood Comb
 Europe. Ca. 16th century. 6"L. x 4"W.
 Collection of Elaine Lustig Cohen.
 Est. \$1,000-\$1,500
 Closing: Wednesday,
 February 28th, 12:22 P.M.



530. Stegodon Fossil
 Indonesia.
 Ca. 900,000 B.P. to 5000 B.P.
 16"L. x 10"H.
 Collection of Mary K. F. Leong, WA.,
 1980-1990's, acquired from Kalidua
 Gallery with original invoice.
 Est. \$2,000-\$3,000
 Closing: Wednesday,
 February 28th, 12:24 P.M.



531. Albrecht Durer "Man of Sorrows by the Column"
 Nuremberg.
 Ca. 16th century A.D.
 4-3/4"H. x 3"W. print size.
 Collection of Mary K. F. Leong, WA.,
 1980-1990.
 Est. \$800-\$1,200
 Closing: Wednesday,
 February 28th, 12:26 P.M.



532. Spanish Vellum Bible Page
 Spain.
 Ca. 15th century A.D.
 5-5/8"H. x 4"W. (sight size)
 12-5/8"H. 10-5/8"W. (framed)
 Collection of Mary K. F. Leong, WA.,
 1980-1990.
 Est. \$300-\$500
 Closing: Wednesday,
 February 28th, 12:28 P.M.



Lot: 458



Lot: 264

